

GENUINE[®]
SCHOOL UNIFORM

BACK 2 SCHOOL



2018

TOPS



WH

White



RD

Red



NA

Navy



RO

Royal



BL

Lt Blue



HU

Hunter



GD

Gold



YE

Yellow



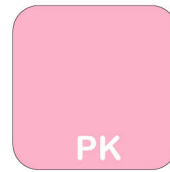
BU

Burgundy



PU

Purple



PK

Pink



BK

Black



GR

Heather Gray

BOTTOMS



BK

Black



KH

Khaki



GR

Gray



NA

Navy

PRINTS



Inside Waistband & Reversible
Belt Detail Ditsy Print

5973

S/S PIQUE POLO

CORE

- COTTON BLEND PIQUE
- FLAT KNIT COLOR
- 1 X 1 RIB CUFF
- 3 - BUTTON PLACKET
- SELF NECK TAPING

| STYLE | WH | NA | RD | BL | RO | GD | YE | BU | PU | HU | BK | GR | PK | MSRP |
|--------------|----|----|----|----|----|----|----|----|----|----|----|----|----|------|
| T55973 4-7 | S | S | S | S | P | P | S | P | P | P | P | P | P | |
| T75973 8-16 | S | S | S | S | P | P | S | P | P | P | P | P | P | |
| T75973 8-20 | S | S | S | S | P | S | S | S | P | P | S | P | P | |
| T96617 HUSKY | P | P | | P | | | | | | | | | | |



WH

NA

RD

BL



RO

GD

YE

BU

PU

HU

BK

GR

PK

4018

L/S PIQUE POLO

- COTTON BLEND PIQUE
- FLAT KNIT COLOR
- 1X1 RIB CUFF
- 3 - BUTTON PLACKET
- SELF NECK TAPING



WH

NA

RD

BL

YE

| STYLE | WH | NA | RD | BL | MSRP |
|-------------------|----|----|----|----|------|
| T54018 4-7 | P | P | P | P | |
| T74018 8-16 | P | P | P | P | |
| T94018 YOUNG MENS | P | | | | |

5940

S/S DRESS SHIRT

- BACK PLEAT
- EXPANDABLE COLLAR
- 4 - HOLE PEARLIZED BUTTON
- FRONT PATCH POCKET
- TAIL HEM
- COTTON BLEND BROADCLOTH



WH

BL

YE

| STYLE | WH | BL | YE | MSRP |
|--------------|----|----|----|------|
| M55940 4-7 | S | P | P | |
| M75940 8-16 | S | P | P | |
| M95940 HUSKY | S | P | P | |

5938

L/S DRESS SHIRT

- BACK PLEAT
- EXPANDABLE COLLAR
- 4 - HOLE PEARLIZED BUTTON
- FRONT PATCH POCKET
- PLEAT AT SLEEVE W/ ADJUSTABLE CUFF
- TAIL HEM
- COTTON BLEND BROADCLOTH



WH

BL

YE

| STYLE | WH | BL | YE | MSRP |
|--------------|----|----|----|------|
| M55938 4-7 | S | P | P | |
| M75938 8-16 | S | P | P | |
| M95940 HUSKY | S | P | P | |

**9852
SWEATER VEST**

- V-NECK
- JERSEY KNIT
- 2 X 2 RIB AT NECK & ARMHOLES
- COTTON / ACRYLIC BLEND



NA

| STYLE | NA | MSRP |
|-------------|----|------|
| V59852 4-7 | P | |
| V79852 8-16 | P | |

**5941
V-NECK CARDIGAN**

- V-NECK CARDIGAN
- DFRONT WELT POCKETS
- 1 X 1 RIB CUFF & HEM
- COTTON / ACRYLIC BLEND



NA

| STYLE | NA | MSRP |
|-------------|----|------|
| W55941 4-7 | P | |
| W75941 8-16 | P | |

SM99

FLAT FRONT SHORT

- ADJUSTABLE WAIST
- 2 SLASH POCKETS
- HOOK & BAR CLOSURE
- COTTON BLEND TWILL

| STYLE | NA | KH | MSRP |
|--------------|----|----|------|
| S5SM99 4-7 | S | S | |
| S7SM99 8-16 | S | S | |
| S9SM99 HUSKY | P | | |



NA

KH

BK

6114

PLEATED FRONT SHORT

- ADJUSTABLE WAIST
- 2 SLASH POCKETS
- HOOK & BAR CLOSURE
- COTTON BLEND TWILL

| STYLE | NA | KH | MSRP |
|-------------------|----|----|------|
| S56114 4-7 | S | S | |
| S76114 8-16 | S | S | |
| S96114 HUSKY | | P | |
| S96114 YOUNG MENS | P | | |



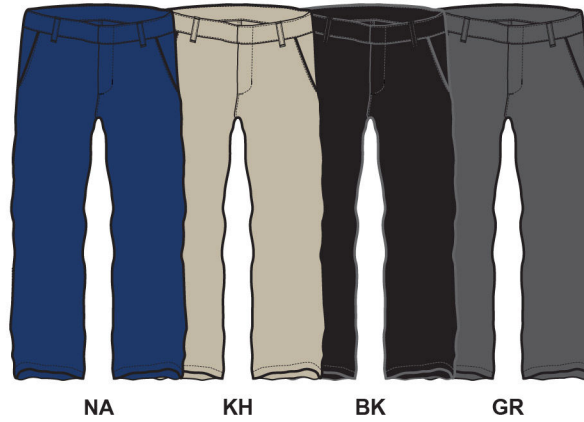
NA

KH

3606 *New Modern Fit
FLAT FRONT DOUBLE KNEE

- ADJUSTABLE WAIST
- 2 SLASH POCKETS
- HOOK & BAR CLOSURE
- COTTON BLEND TWILL - *MEDIUM STARCH*

| STYLE | NA | KH | BK | GR | MSRP |
|-------------------|----|----|----|----|------|
| E53606 4-7 | S | S | P | S | |
| E73606 8-16 | S | S | P | S | |
| E93606 HUSKY | S | S | P | S | |
| E93606 YOUNG MENS | S | P | | P | |

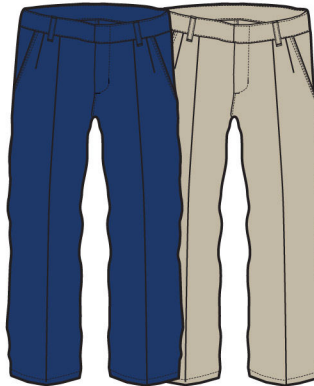


NA KH BK GR

4695 *New Modern Fit
PLEATED FRONT DOUBLE KNEE

- ADJUSTABLE WAIST
- 2 SLASH POCKETS
- HOOK & BAR CLOSURE
- COTTON BLEND TWILL - *MEDIUM STARCH*

| STYLE | NA | KH | MSRP |
|-------------|----|----|------|
| E54695 4-7 | P | P | |
| E74695 8-16 | P | | |

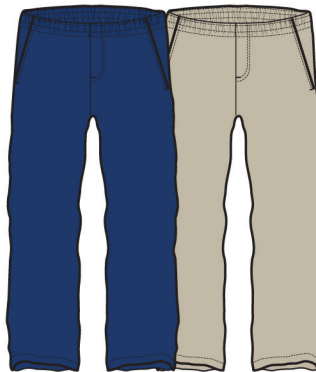


NA KH

HV91 *New Modern Fit
FULL ELASTIC FLAT FRONT PANT

- *FUL LW.B. ELASTIC*
- 2 SLASH POCKETS
- FAUX FLY
- COTTON BLEND TWILL

| STYLE | NA | KH | MSRP |
|-------------|----|----|------|
| E5HV91 4-7 | P | P | |
| E7HV91 8-16 | P | P | |

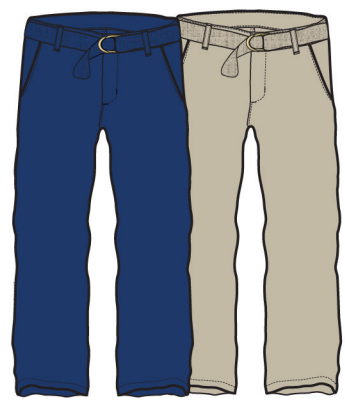


NA KH

**ED52
BELTED FLAT FRONT**

- **ADJUSTABLE WAIST**
- 2 SLASH POCKETS
- HOOK & BAR CLOSURE
- COTTON BLEND TWILL

| STYLE | NA | KH | MSRP |
|-------------|----|----|------|
| E5ED52 4-7 | P | P | |
| E7ED52 8-16 | P | P | |



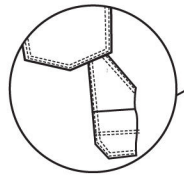
NA

KH

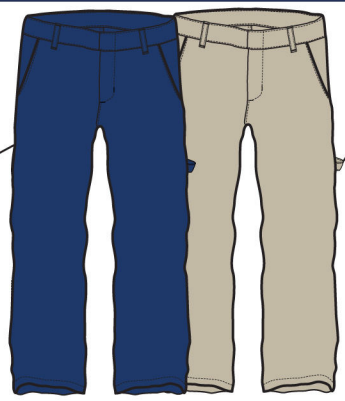
**4642
FLAT FRONT CARPENTER**

- **ADJUSTABLE WAIST**
- 2 SLASH POCKETS
- BACK HAMMER LOOP & CARPENTER PKT
- HOOK & BAR CLOSURE
- COTTON BLEND TWILL - *MEDIUM STARCH*

BACK PKT DETAIL



HAMMER LOOP



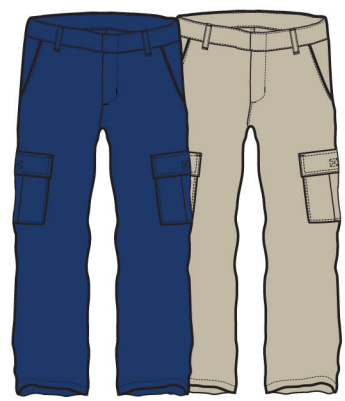
NA

KH

| STYLE | NA | KH | MSRP |
|-------------|----|----|------|
| E54642 4-7 | P | P | |
| E74642 8-16 | P | P | |

**7093
FLAT FRONT CARGO**

- **ADJUSTABLE WAIST**
- 2 SLASH POCKETS
- 2 SIDE CARGO PKTS
- HOOK & BAR CLOSURE
- COTTON BLEND TWILL - *PEACHED*



NA

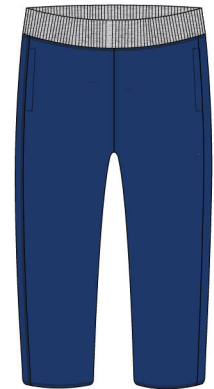
KH

| STYLE | NA | KH | MSRP |
|-------------|----|----|------|
| E57093 4-7 | P | P | |
| E77093 8-16 | P | P | |

**1895
FLEECE PANT**

- COTTON BLEND FLEECE
- RIBBED W.B. W/ ELASTIC

| STYLE | NA | KH | MSRP |
|-------------|----|----|------|
| E51895 4-7 | S | S | |
| E71895 8-16 | S | S | |



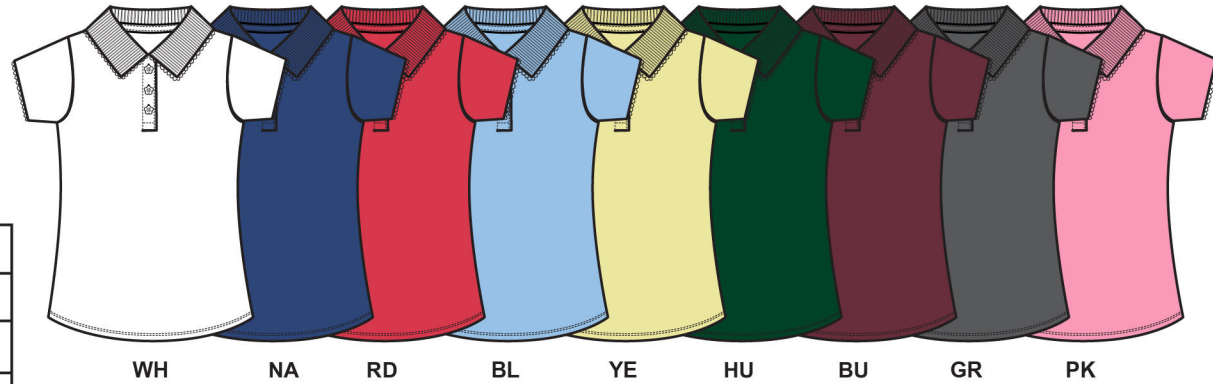
NA

9851

S/S JERSEY POLO W/ PICOT EDGE

- FLAT KNIT COLLAR W/ PICOT TRIM
- OPEN CUFF W/ PICOT TRIM EGDE
- FLOWER BUTTON
- COTTON BLEND JERSEY

BASIC



WH NA RD BL YE HU BU GR PK

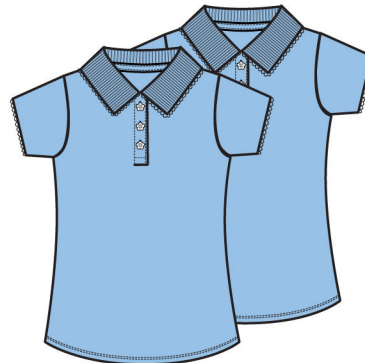
| STYLE | WH | NA | RD | BL | YE | HU | BU | GR | PK | MSRP |
|------------------|----|----|----|----|----|----|----|----|----|------|
| T29851 4-6X | S | S | S | S | S | S | S | P | P | |
| T39851 7-16 | S | S | S | S | S | S | S | P | P | |
| T89851 10.5-20.5 | P | P | | P | | | | | | |

1880

2 PC PACK S/S JERSEY POLO W/ PICOT EDGE

NEW

- FLAT KNIT COLLAR W/ PICOT TRIM
- OPEN CUFF W/ PICOT TRIM EGDE
- FLOWER BUTTON
- COTTON BLEND JERSEY



BL

| STYLE | WH | NA | BL | MSRP |
|-------------|----|----|----|------|
| T21880 4-6X | P | P | P | |
| T31880 7-16 | P | P | P | |

2998

L/S JERSEY POLO W/ PICOT EDGE

- FLAT KNIT COLLAR W/ PICOT TRIM
- 1 X 1 RIB CUFF
- FLOWER BUTTON
- COTTON BLEND JERSEY

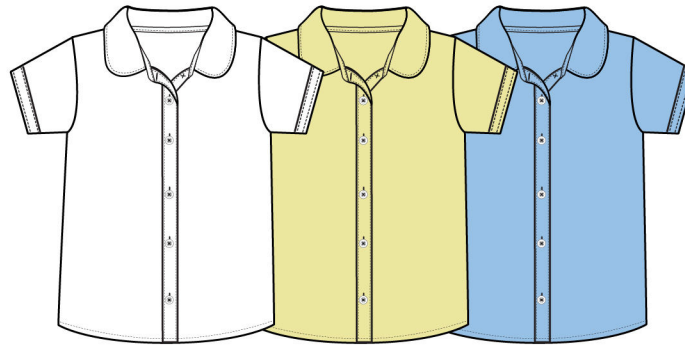


WH NA RD BL YE

| STYLE | WH | NA | RD | BL | YE | MSRP |
|------------|----|----|----|----|----|------|
| T2998 4-6X | P | P | P | P | P | |
| T3998 7-16 | P | P | P | P | P | |

5951
S/S BROADCLOTH W/ PETER PAN COLLAR

- COTTON BLEND BROADCLOTH
- PETER PAN COLLAR
- 4 - HOLE PEARLIZED BUTTON
- TAIL HEM



WH YE BL

| STYLE | WH | YE | BL | MSRP |
|-------------|----|----|----|------|
| M25951 4-6X | S | P | P | |
| M35951 7-16 | S | P | P | |

0449
S/S BROADCLOTH W/ POINTY COLLAR

NEW

- COTTON BLEND BROADCLOTH
- POINTY COLLAR
- 4 - HOLE PEARLIZED BUTTON
- TAIL HEM



WH

| STYLE | WH | MSRP |
|-------------|----|------|
| M30449 7-20 | S | |

5948
L/S BROADCLOTH W/ PETER PAN COLLAR

- COTTON BLEND BROADCLOTH
- PETER PAN COLLAR
- 4 - HOLE PEARLIZED BUTTON
- SLEEVE W/ ADJUSTABLE CUFF
- TAIL HEM



WH YE BL

| STYLE | WH | YE | BL | MSRP |
|-------------|----|----|----|------|
| M25948 4-6X | S | P | P | |
| M35948 7-16 | S | P | P | |

2951
ZIP FRONT SWEATER W/ SLEEVE POCKET

- ZIP FRONT
- JERSEY KNIT
- FRONT POCKETS
- MOCK NECK
- CONTRAST NECK TRIM
- COTTON / ACRYLIC BLEND



NA

| STYLE | NA | MSRP |
|-------------|----|------|
| T22951 4-6X | P | |
| T32951 7-16 | P | |

5949
BASIC CARDIGAN SWEATER

- BUTTON FRONT
- JERSEY KNIT
- FRONT POCKETS
- CREW NECK
- CONTRAST NECK TRIM
- COTTON / ACRYLIC BLEND



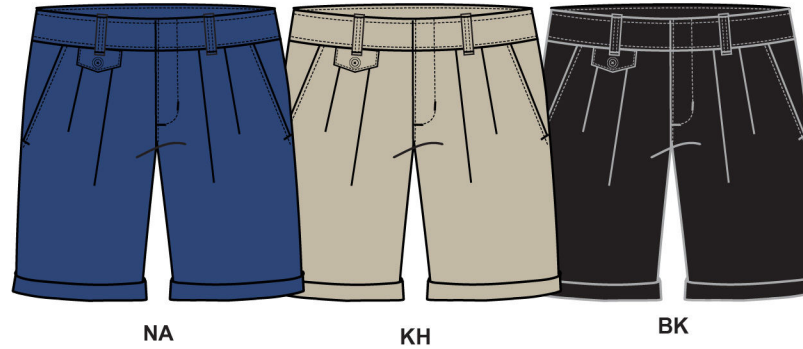
NA

| STYLE | NA | MSRP |
|-------------|----|------|
| T25949 4-6X | P | |
| T35949 7-16 | P | |

**6115
PLEATED FRONT W/ COIN PKT TWILL SHORT**

- COTTON BLEND TWILL - *MEDIUM STARCH*
- *ADJUSTABLE ELASTIC INSIDE W.B.*
- 2 SLASH POCKETS
- HOOK & BAR CLOSURE

| STYLE | NA | KH | BK | MSRP |
|-------------|----|----|----|------|
| S26115 4-6X | S | S | S | |
| S36115 7-16 | S | S | S | |



**CK39
BERMUDA TWILL SHORT**

- COTTON BLEND TWILL - *PEACHED*
- *ADJUSTABLE ELASTIC INSIDE W.B.*
- 4 HOLE ROUND DTM BUTTON
- PRINTED INSIDE W.B.
- BERMUDA FIT

| STYLE | NA | KH | BK | MSRP |
|-------------|----|----|----|------|
| S2CK39 4-6X | S | S | P | |
| S3CK39 7-16 | S | S | P | |



**CK36
BERMUDA SHORT**

- BERMUDA FIT
- DECORATIVE FRONT POCKET
- 4 HOLE ROUND DTM BUTTON
- PRINTED / SELF REVERSIBLE BET
- SIDE SLIT W/ LOOP CLOSURE
- COTTON BLEND TWILL
- *ADJUSTABLE ELASTIC INSIDE W.B.*

| STYLE | NA | MSRP |
|-------------|----|------|
| S3CK36 7-16 | P | |



**JU83
SLIM STRAIGHT TWILL PANT**

- COTTON BLEND TWILL - *PEACHED*
- *ADJUSTABLE ELASTIC INSIDE W.B.*
- SLIM STRAIGHT FIT
- 2 SLASH POCKETS
- BUTTON CLOSURE - 4 HOLE ROUND DTM
- PRINTED INSIDE W.B.

| STYLE | NA | KH | BK | GR | MSRP |
|--------------------|----|----|----|----|------|
| E2JU83 4-6X | S | P | P | P | |
| E3JU83 7-16 | S | P | P | P | |
| E8JU83 10.5 - 20.5 | P | P | | | |



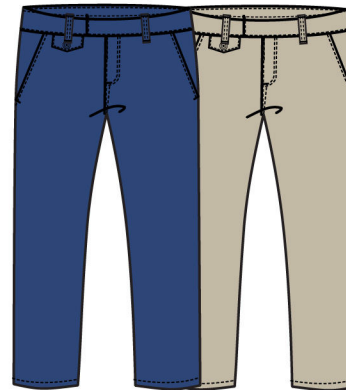
NA KH BK GR

**PL84
MODERN FIT PANT W/ COIN PKT TWILL PANT**

NEW

- COTTON BLEND TWILL
- *ADJUSTABLE ELASTIC INSIDE W.B.*
- 2 SLASH POCKETS
- HOOK & BAR CLOSURE
- NEW MODERN FIT

| STYLE | NA | KH | MSRP |
|-------------|----|----|------|
| E2PL84 4-6X | S | P | |
| E3PL84 7-16 | S | P | |



NA KH

**5946
LONG PLEATED POLY SKIRT**

- SKIRT
- ALL AROUND PLEAT
- SIDE ZIP & BUTTON CLOSURE
- POLYESTER

| STYLE | NA | KH | MSRP |
|--------------------|----|----|------|
| K25946 4-6X | P | P | |
| K35946 7-16 | P | P | |



NA

KH

**PB14
REVERSIBLE BELT TWILL SCOOTER**

- SCOOTER
- PLEATED HEM DETAIL
- PRINTED REVERSIBLE BELT
- KNIT SHORT FOR COMFORT
- COTTON BLEND TWILL



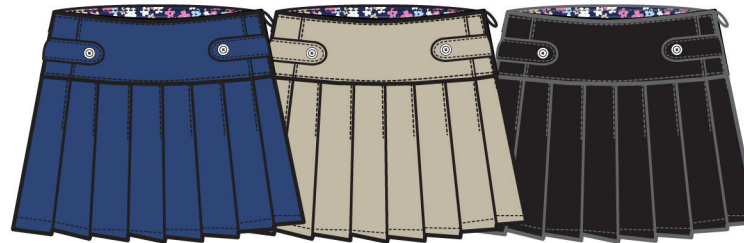
NA

KH

| STYLE | NA | KH | MSRP |
|-------------|----|----|------|
| K2PB14 4-6X | P | P | |
| K3PB14 7-16 | P | P | |

**CZ90
PLEATED TWILL SCOOTER**

- SCOOTER
- DECORATIVE FRONT TABS
- ALL AROUND PLEAT
- INSIDE DECORATIVE PRINTED W.B.
- KNIT SHORT FOR COMFORT
- COTTON BLEND TWILL



NA

KH

BK

| STYLE | NA | KH | BK | MSRP |
|--------------|----|----|----|------|
| K2CZ90 4-6X | P | P | P | |
| K3CZ90 7-16 | P | P | P | |
| K1CZ90 18-20 | P | P | | |

**PJ18
FULLY PLEATED TWILL SCOOTER**

- SCOOTER
- DECORATIVE FRONT BUTTONS
- ALL AROUND PLEAT
- INSIDE DECORATIVE PRINTED W.B.
- KNIT SHORT FOR COMFORT
- COTTON BLEND TWILL



NA

KH

| STYLE | NA | KH | MSRP |
|-------------|----|----|------|
| K2PJ18 4-6X | P | P | |
| K3PJ18 7-16 | P | P | |

**PB22
PLEATED POLY SCOOTER**

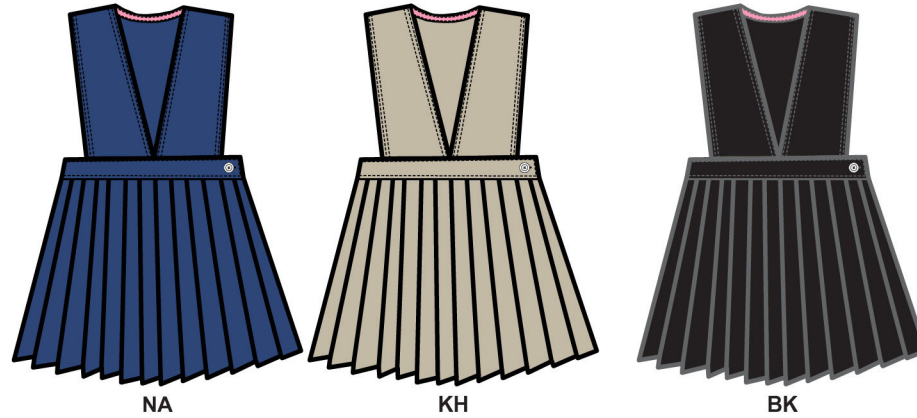
- SCOOTER
- PLEATED DROP HEM ALL AROUND
- KNIT SHORT FOR COMFORT
- POLYESTER



NA

KH

| STYLE | NA | KH | MSRP |
|-------------|----|----|------|
| K2PB22 4-6X | P | P | |
| K3PB22 7-16 | P | P | |



5944
V-NECK PLEATED POLY JUMPER

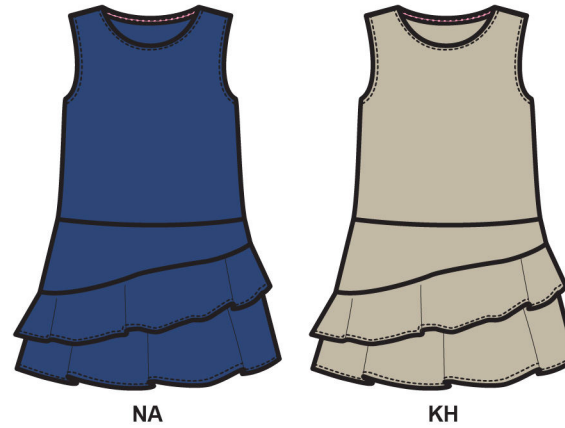
- ALL AROUND PLEAT HEM
- SIDE BUTTON & ZIPPER CLOSURE
- CONTRAST NECK TRIM
- 100% POLYESTER

| STYLE | NA | KH | BK | MSRP |
|-------------|----|----|----|------|
| A25944 4-6X | S | S | S | |
| A35944 7-16 | S | S | S | |

HV80 ★
RUFFLE HEM POLY JUMPER

- A-LINE
- SELF RUFFLE HEM DETAIL
- CONTRAST NECK TRIM
- 100% POLYESTER

| STYLE | NA | KH | MSRP |
|-------------|----|----|------|
| A2HV80 4-6X | P | P | |
| A3HV80 7-16 | P | P | |



S147
SIDE PLEAT POLY JUMPER

- A-LINE
- PATCH POCKET W/ BUTTON FLAP
- SIDE PLEAT
- CONTRAST NECK TRIM
- 100% POLYESTER

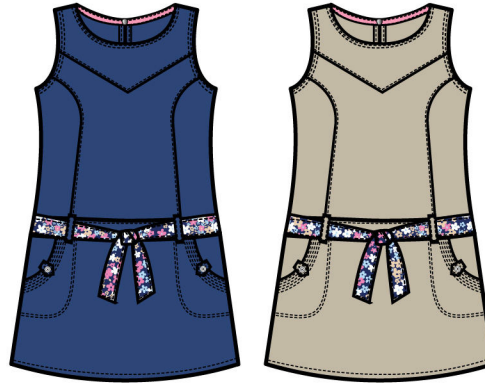
| STYLE | NA | KH | MSRP |
|-------------|----|----|------|
| A2S147 4-6X | P | P | |
| A3S147 7-16 | P | P | |



**NC45
REVERSIBLE BELT TWILL JUMPER**

- A-LINE
- REVERSIBLE PRINTED BELT
- PRINCESS SEAMS
- CONTRAST NECK TRIM
- COTTON BLEND TWILL

| STYLE | NA | KH | MSRP |
|-------------|----|----|------|
| A2NC45 4-6X | P | P | |
| A3NC45 7-16 | P | P | |



NA

KH

**JB01
REVERSIBLE BELT TWILL JUMPER**

- ALL AROUND PLEAT HEM
- REVERSIBLE PRINTED BELT
- PRINCESS SEAMS
- CONTRAST NECK TRIM
- COTTON BLEND TWILL

| STYLE | NA | KH | MSRP |
|-------------|----|----|------|
| A2JB01 4-6X | P | P | |
| A3JB01 7-16 | P | P | |



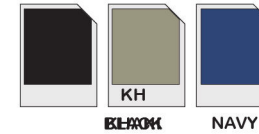
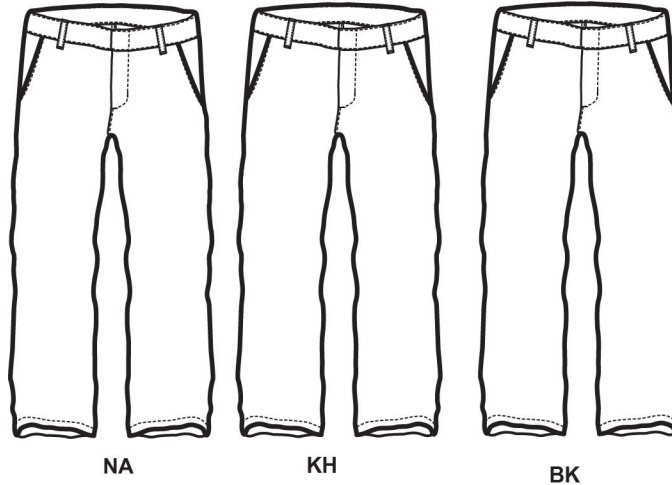
NA

KH

BOYS

**YK11
FLAT FRONT PANT**

- ADJUSTABLE WAIST
- 2 SLASH POCKETS
- HOOK & BAR CLOSURE
- COTTON BLEND TWILL

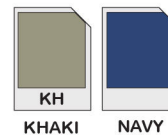
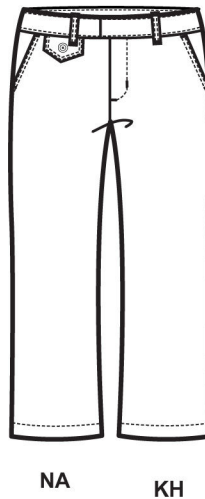


| STYLE | NA | KH | MSRP |
|-------------|----|----|------|
| E5YK11 4-7 | P | P | |
| E7YK11 7-16 | P | P | |

GIRLS

**YK19
FLAT FRONT PANT**

- ADJUSTABLE ELASTIC INSIDE W.B.
- MOCK COIN POCKET FLAP W/ BUTTON
- HOOK & BAR CLOSURE
- SIDE SLASH POCKETS
- COTTON BLEND TWILL



| STYLE | NA | KH | MSRP |
|--------------|----|----|------|
| E4YK19 2T-4T | P | P | |
| E2YK19 4-6X | P | P | |
| E3YK19 7-16 | P | P | |