

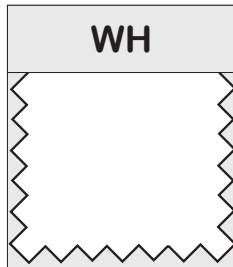


**YOUNG MENS & JUNIORS
UNIFORMS**

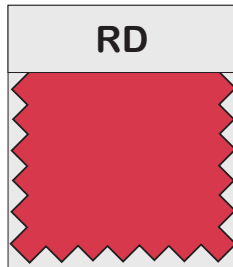
2018



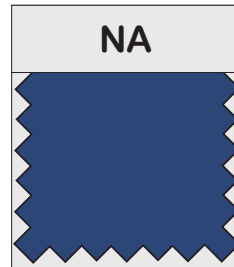
TOPS



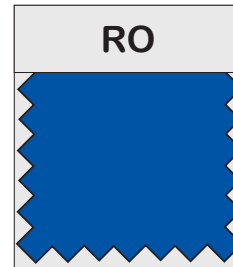
WHITE



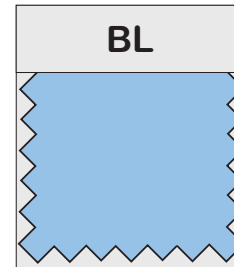
RED



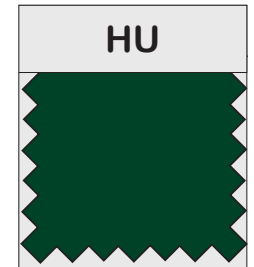
NAVY



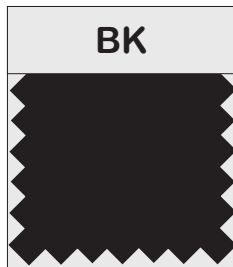
ROYAL



LT. BLUE



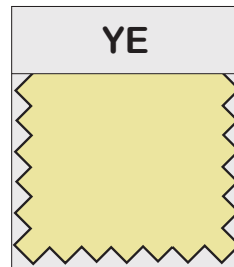
HUNTER



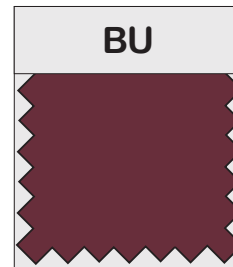
BLACK



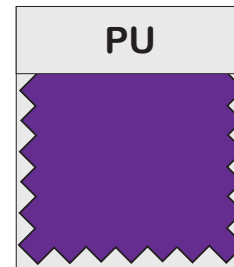
GREY



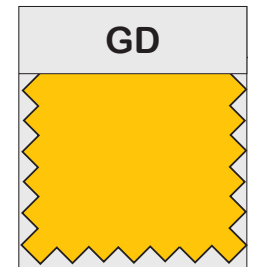
YELLOW



BURGUNDY

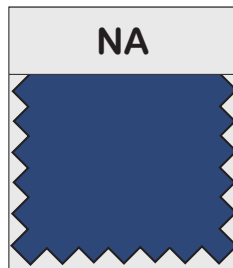


PURPLE



GOLD

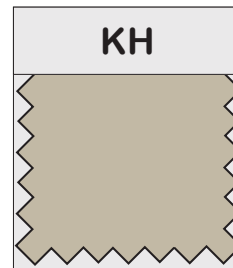
BOTTOMS



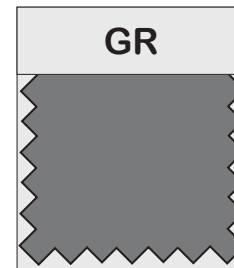
NAVY



BLACK



KHAKI



GREY



JUNIORS

Pant Sizes*	0	1	3	5	7	9	11	13	15	17
Inseam	33"	33"	33"	33"	33"	33"	33"	33"	33"	33"

* Not all sizes available in all styles

Tops	S	M	L	XL
Select Styles & Colors	2X	3X		

YOUNG MENS

Pant Waist*	28	29	30	31	32	33	34	36	38	40	42
Inseam	30"	30"	30"	30"	30"	30"	30"	30"	30"	30	30"
	32"	32"	32"	32"	32"	32"	32"	32"	32"	32"	32"
					34"	34"	34"	34"			

* Not all sizes available in all styles

Tops	S	M	L	XL
Extended Sizes	2XL	3XL	4XL	

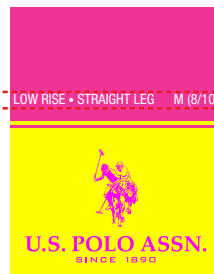
6 pc by Size & Color for each



JUNIOR TRIMS



HANGTAG



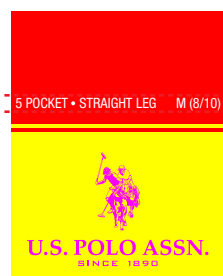
HANGTAG



YOUNG MENS



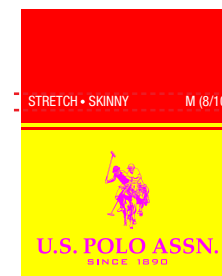
HANGTAG



FLASHER



HANGTAG



FLASHER



U.S. POLO ASSN.



JUNIORS
UNIFORMS



PIQUE POLO

Style # 7407

Short Sleeve Stretch
Pique Polo Top

- FLAT KNIT COLLAR & CUFFS
- SELF FABRIC BINDING
- 2 BUTTON PLACKET
- DTM BUTTONS
- SIDE SLITS
- COTTON BLEND JERSEY



STYLE # T67407WHSV
T67407WHMV
T67407WHLV
T67407WHXLV

T67407RDSV
T67407RDMV
T67407RDLV
T67407RDXLV

T67407NASV
T67407NAMV
T67407NALV
T67407NAXLV

T67407BKSV
T67407BKMV
T67407BKLV
T67407BKXLV

T67407BUSV
T67407BUMV
T67407BULV
T67407BUXLV

T67407HUSV
T67407HUMV
T67407HULV
T67407HUXLV

T67407PUSV
T67407PUMV
T67407PULV
T67407UPXLV

COLORS:
WHITE, RED, NAVY, BLACK, BURGUNDY, HUNTER, PURPLE

SIZES:
REGULAR SIZES: S-XL
PLUS SIZES: 2X, 3X



OXFORD SHIRT

Style # 7408

Short Sleeve Stretch
Oxford Shirt

- 7 BUTTON PLACKET
- BUTTON DOWN COLLAR
- DTM BUTTONS
- CHEST PATCH POCKET
- FRONT AND BACK DARTS
- SLIM FIT
- STRETCH OXFORD



STYLE # M67408WHSV
M67408WHMV
M67408WHLV
M67408WHXLV



M67408BLSV
M67408BLMV
M67408BLLV
M67408BLXLV

COLORS:
WHITE, LT. BLUE

SIZES:
REGULAR SIZES: S-XL
PLUS SIZES: 2X, 3X

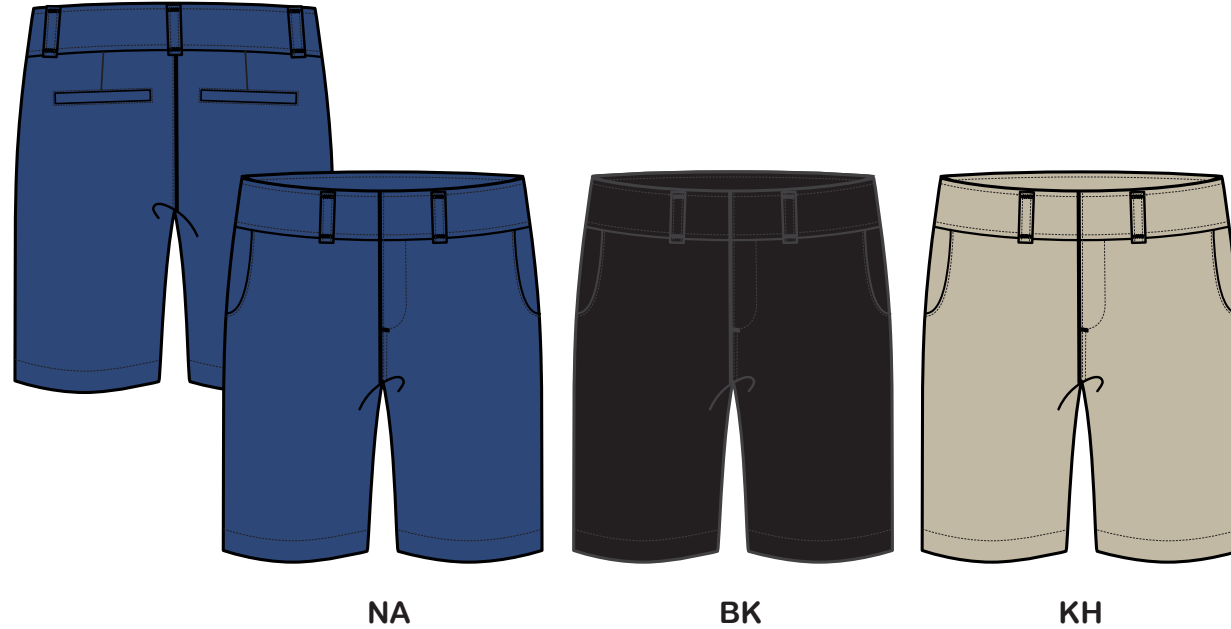


SHORTS

Style # 7409

STRETCH BERMUDA
SHORT

- HOOK & BAR CLOSURE
- J SHAPED FRONT POCKETS
- 2 WELT BACK POCKETS



COLORS:
NAVY, BLACK, KHAKI

SIZES:
SIZES: 0-15
12" INSEAM

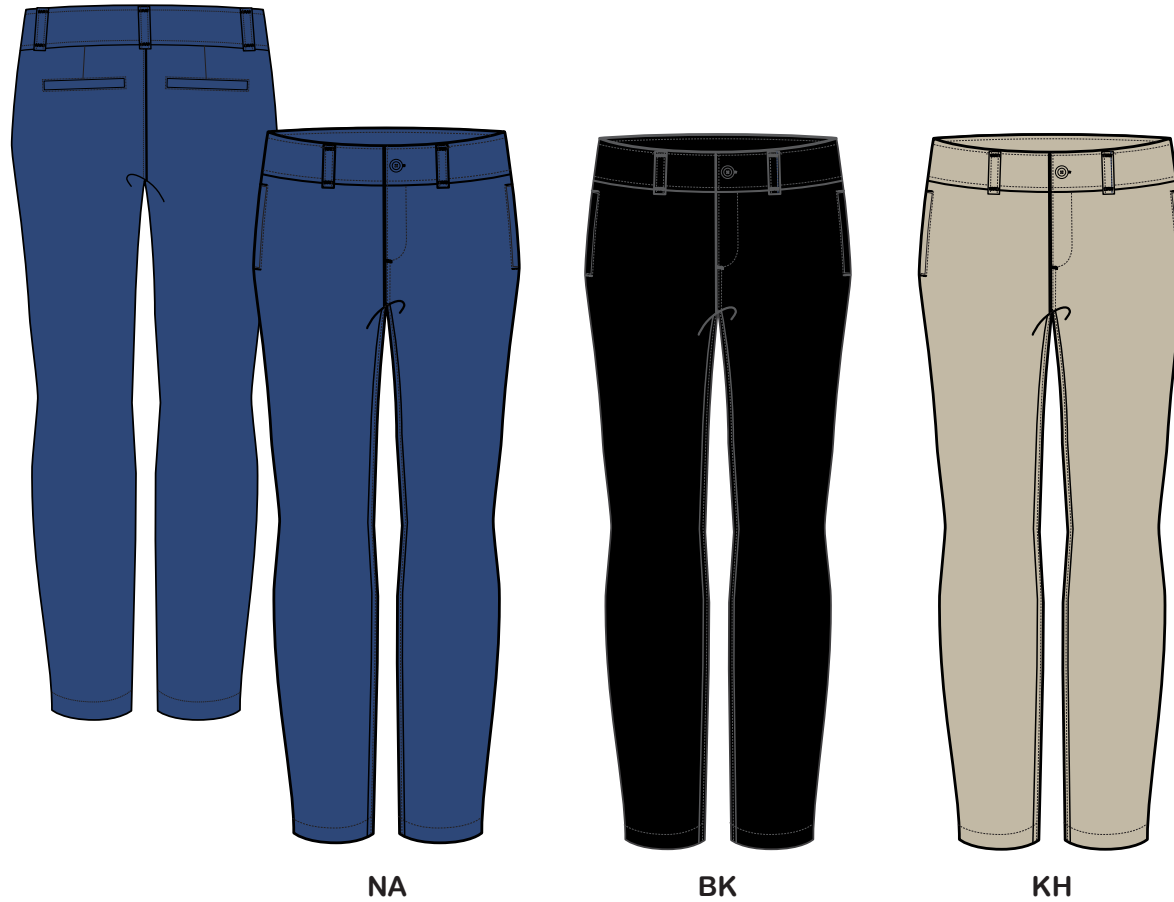


SKINNY

Style # 7410

Original Skinny Leg Stretch Pant

- LOGO SHANK BUTTON CLOSURE
- 2 SIDE SEAM POCKETS
- 2 WELT BACK POCKETS
- LOW RISE
- SKINNY LEG



COLORS:
NAVY, BLACK, KHAKI

SIZES:
SIZES: 0-17
6 1/2" LEG OPENING
33" INSEAM



STRAIGHT

Style # 7412

Original Straight Leg
Stretch Pant

- LOGO SHANK BUTTON CLOSURE
- 2 SIDE SEAM POCKETS
- 2 WELT BACK POCKETS
- LOW RISE
- STRAIGHT LEG



NA

BK

KH

GR

COLORS:
NAVY, BLACK, KHAKI, GREY

SIZES:
SIZES: 0-15
7 1/2" LEG OPENING
33" INSEAM



YOUNG MEN'S UNIFORMS



PIQUE POLO

Style # 7414

Short Sleeve Stretch Pique Polo Top

- FLAT KNIT COLLAR & CUFFS
- SELF FABRIC BINDING
- 2 BUTTON PLACKET
- WHITE PEARLIZED BUTTON
- SIDE SLITS
- COTTON BLEND JERSEY



STYLE # T97414WHSV
T97414WHMV
T97414WHLV
T97414WHXLV

T97414RDSV
T97414RDMV
T97414RDLV
T97414RDXLV

T97414NASV
T97414NAMV
T97414NALV
T97414NAXLV

T97414ROSV
T97414ROMV
T97414ROLV
T97414ROXLV

T97414BLSV
T97414BLMV
T97414BLLV
T97414BLXLV



T97414HGVS
T97414HGMV
T97414HGLV
T97414HGXLV

T97414BKSV
T97414BKMV
T97414BKLV
T97414BKXLV

T97414BUSV
T97414BUMV
T97414BULV
T97414BUXLV

T97414PUSV
T97414PUMV
T97414PULV
T97414PUXLV

COLORS:
WHITE, RED, NAVY, ROYAL, LT. BLUE, HEATHER GREY,
BLACK, BURGUNDY, PURPLE

SIZES:
REGULAR SIZES: S-XL
PLUS SIZES: 2X, 3X



OXFORD SHIRT

Style # 7416

Short Sleeve
Oxford Shirt

- FRONT PATCH POCKET
- 7 BUTTON PLACKET
- WHITE PEARLIZED BUTTONS
- CLASSIC FIT
- COTTON BLEND OXFORD



STYLE # M97416WHSV
M97416WHMV
M97416WHLV
M97416WHXLV



M97416BLSV
M97416BLMV
M97416BLLV
M97416BLXLV



M97416YESV
M97416YEMV
M97416YELV
M97416YEXLV

COLORS:
WHITE, LT. BLUE, YELLOW

SIZES:
REGULAR SIZES: S-XL

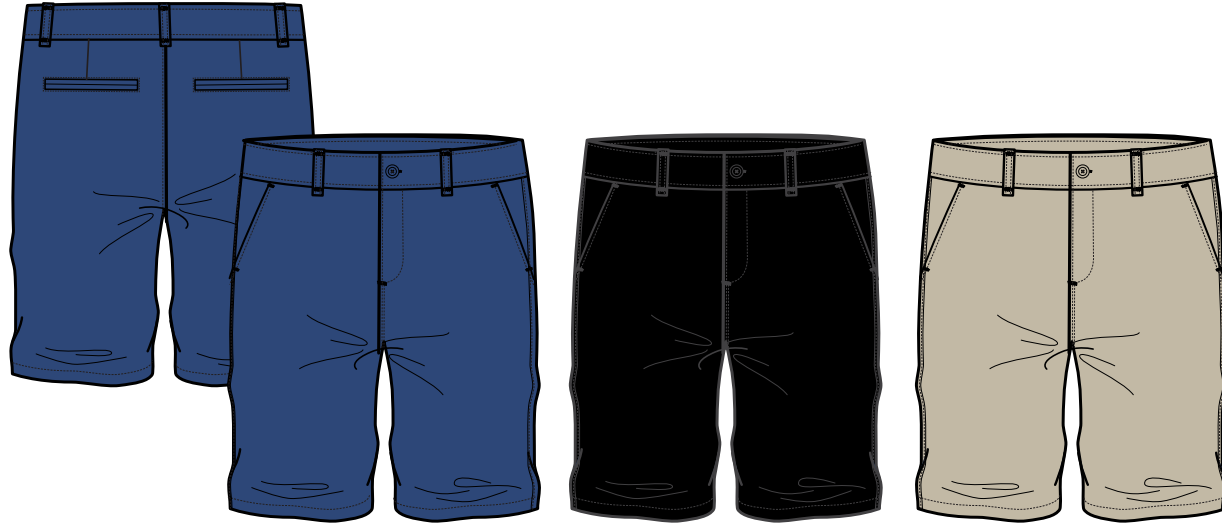


FLEX SHORTS

Style # 7417

CLASSIC FLAT
FRONT FLEX SHORT

- LOGO SHANK BUTTON CLOSURE
- 2 SLASH FRONT POCKETS
- 2 WELT BACK POCKETS



NA

BK

KH

COLORS:
NAVY, BLACK, KHAKI

SIZES:
SIZES: 28-42
10-14" INSEAM

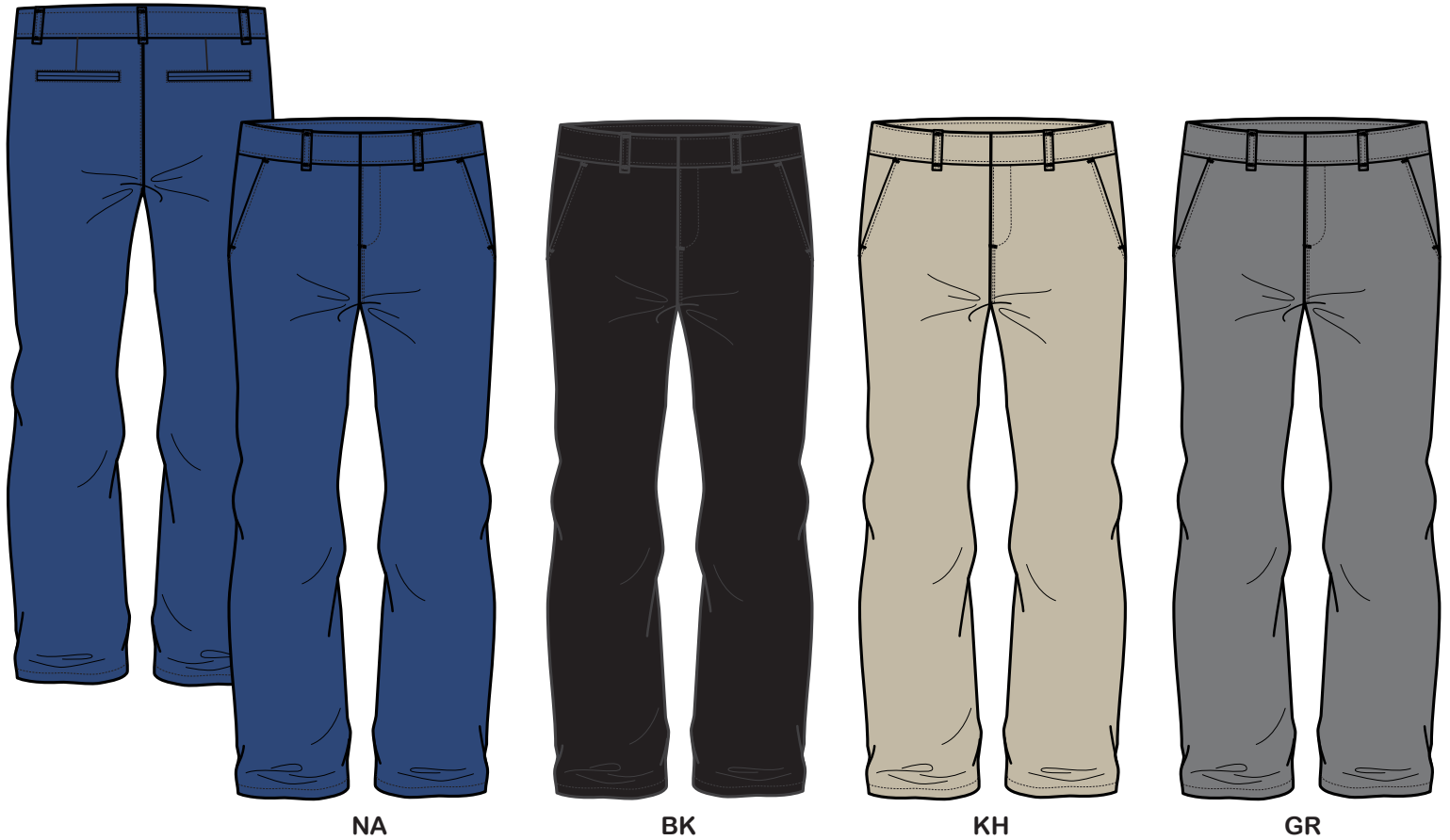


STRAIGHT LEG PANT

Style # 7418

Classic Straight Fit Pant

- HOOK & BAR CLOSURE
- 2 SLASH POCKETS
- 2 WELT BACK POCKETS
- STRAIGHT LEG



COLORS:
NAVY, BLACK, KHAKI, GREY

SIZES:
SIZES: 28-42
9 1/2" LEG OPENING

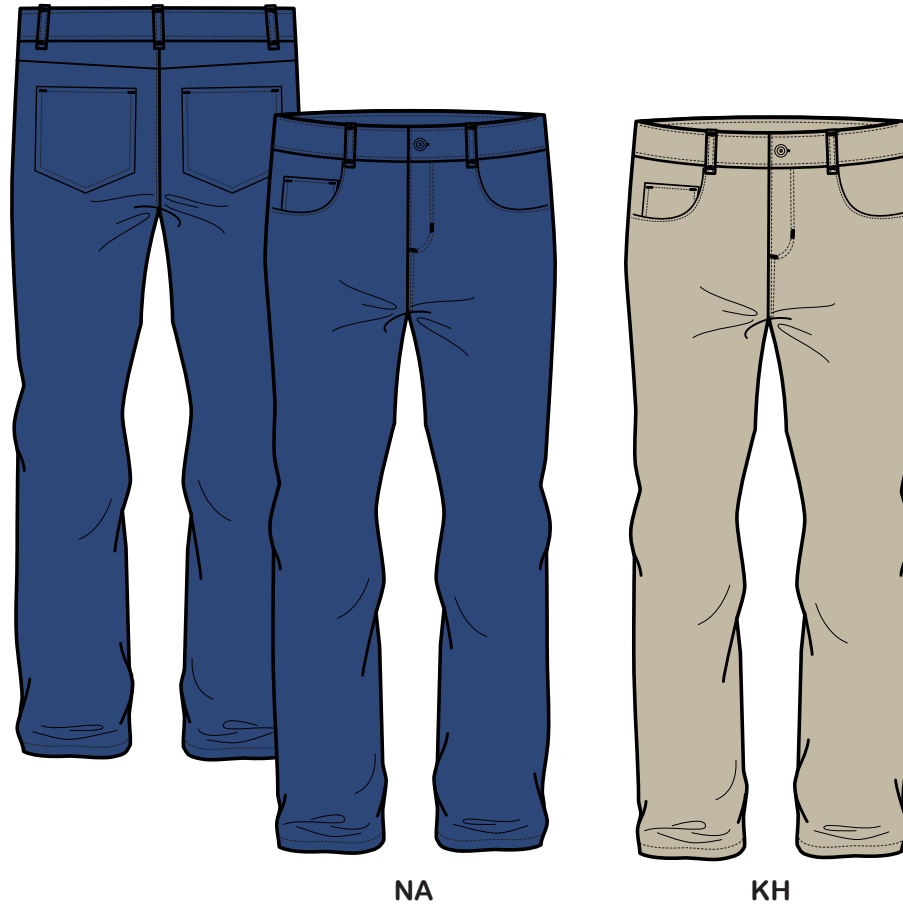


FLEX PANT

Style # 7420

**Skinny 5 Pocket
Stretch Pant**

- LOGO SHANK BUTTON CLOSURE
- 2 SCOOP POCKETS WITH COIN POCKET
- 2 BACK PATCH POCKETS
- SKINNY LEG



COLORS:
NAVY, KHAKI

SIZES: 28-42
8" LEG OPENING

U.S. POLO ASSN.



UNIFORMS

LONGSTREET HOLDINGS