

BACK to SCHOOL

2018



U.S. POLO ASSN.



SINCE 1890

ASSORTMENT

GIRLS

SIZE		ASSORTMENT
TOP / KNIT DRESS / WOVEN DRESS/ SWEATER		
4-6X	S (4) - M (5/6) - L (6X)	2-6-4
7-16	S (7/8) - M (10/12) - L (14/16)	4-5-3
PANT / WOVEN SHIRT / JUMPER / SCOOTER / SHORT		
2T-4T	2T-3T-4T	2-6-4
4-6X	4-5-6-6X	2-3-4-3
7-16	7-8-10-12-14-16	2-2-3-2-2-1
10.5-20.5	10.5 - 12.5 - 14.5 - 16.5 - 18.5 - 20.5	1-2-3-3-2-1
TOP/ SWEATER/ PANT/ JUMPER/ SCOOTER/ SHORT		
18-20	18-20	8-4

BOYS

SIZE		ASSORTMENT
POLO TOP/ SWEATER		
4-7	S (4) - M (5/6) - L (7)	2-6-4
8-16	S (8) - M (10/12) - L (14/16)	4-5-3
PANT / WOVEN SHIRT / SHORT		
2T-4T	2T-3T-4T	2-6-4
4-7	4-5-6-7	2-3-4-3
8-16	8-10-12-14-16	3-3-2-2-2
10H-20H	10H - 12H - 14H - 16H - 18H - 20H	1-2-3-3-2-1
TOP/ SWEATER/ PANT/SHORT		
18-20	18-20	8-4

Note: All PLUS / HUSKY / HALF SIZE & SWEATERS -12 pc pre-pack
 All pre-packs are 24pc pack w 2 inners of 12 pc pre-pack
 All solid size packing is 12 PC master carton





Sales Style number order breakdown: **W38514NAV**

W	3	8514	NA	V
CATAGORY (SWEATER)	SIZE (7-16)	STYLE#	COLOR CODE	USPA

CODE	CATEGORY
A	JUMPERS, DRESSES
E	ALL PANTS
F	JACKETS, OUTERWEAR, FLEECE (INCL HOODIES)
K	SKIRTS, SCOOTER, SKORTS
M	WOVENS
S	SHORTS
T	KNIT TOPS
V	SWEATER VESTS
W	SWEATERS

CODE	SIZE RANGE
1	18-20 GIRLS / BOYS
2	4-6X GIRLS
3	7-16X GIRLS
4	2T-4T GIRLS / BOYS
5	4-7 BOYS
7	8-16 BOYS
8	PLUS GIRLS
9	HUSKY BOYS



School Colors

Tops



WH

White



RD

Red



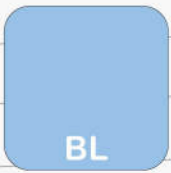
NA

Navy



RO

Royal



BL

Lt Blue



HU

Hunter



GD

Gold



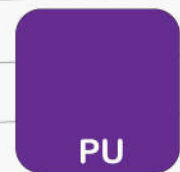
YE

Yellow



BU

Burgundy



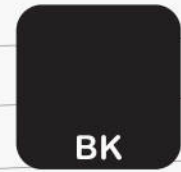
PU

Purple



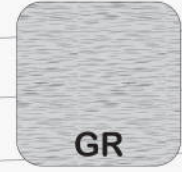
PK

Pink



BK

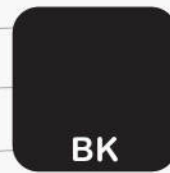
Black



GR

Heather Grey

Bottoms



BK

Black



KH

Khaki



GR

Gray



NA

Navy

Prints



Inside Waistband Detail &
Reversible Belt Detail

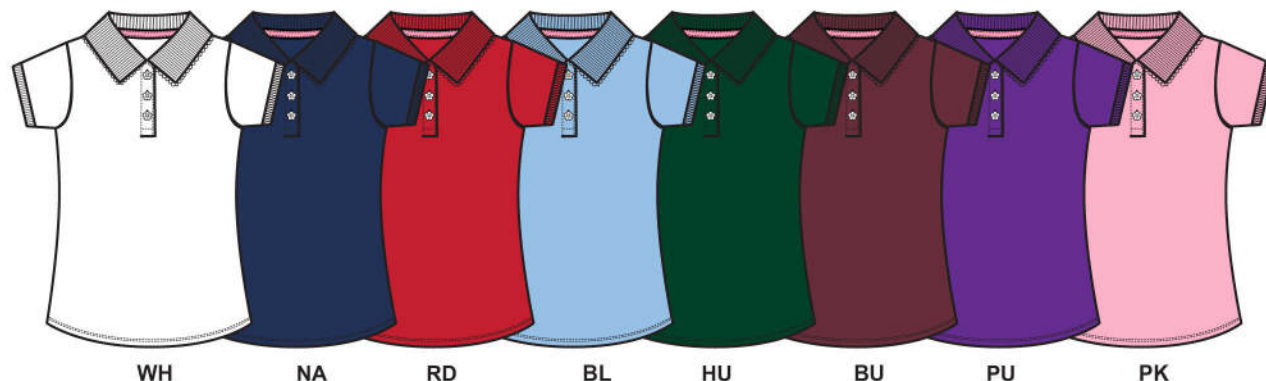
IF89

S/S INTERLOCK POLO W/ PICOT EDGE

NEW CORE

- FLAT KNIT COLLAR W/ PICOT TRIM
- 1 X 1 RIB CUFF
- FLOWER BUTTON
- CONTRAST NECK TRIM
- COTTON BLEND INTERLOCK

STYLE	WH	NA	RD	BL	HU	BU	PU	PK	MSRP
T2IF89 * XS-S	S	S	S	S	S	S	**P	**P	\$24.00
T3IF89 * M-XL	S	S	S	S	S	S	**P	**P	\$24.00
T1IF89 * XXL	S	S	S	S	S	S	S	S	\$24.00
T8IF89*10.5-20.5	P	P							\$26.00



NOTE: *ONLY FOR IF89 SIZE & ASSORTMENT IS CALLED OUT BELOW

NOTE: **ONLY FOR PU & PK STANDARD ASSORTMENT (T2IF89 4-6X & T3IF89 7-16)

7524

S/S STRETCH PIQUE POLO TOP

NEW CORE

- FLAT KNIT COLLAR
- 1 X 1 RIB CUFF
- 3 BUTTON PLACKET
- SELF FABRIC BINDING
- COTTON BLEND PIQUE

STYLE	WH	NA	RD	BK	GR	MSRP
T27524 * XS-S	S	S	S	S	S	\$24.00
T37524 * M-XL	S	S	S	S	S	\$24.00
T17524 * XXL	S	S	S	S	S	\$24.00



NOTE: * ONLY FOR 7524 SIZE & ASSORTMENT IS CALLED OUT BELOW

* SIZE	*ASSORTMENT
XS-S XS (4/5) - S (6/6X)	10-14
M-XL M (7/8) -L (10/12) - XL (14/16)	10-8-6
XXL XXL (18-20)	12

CZ30

S/S JERSEY POLO W/ LACE INSET

- SELF COLLAR
- CAP SLEEVE / OPEN CUFF
- EYELET SNAP DETAIL
- 2-FER STYLE W/ LACE TRIM
- DECORATIVE NECK TRIM
- COTTON BLEND JERSEY

STYLE	WH	NA	BL	MSRP
T2CZ30 4-6X	P	P	P	\$26.00
T3CZ30 7-16	P	P	P	\$26.00



WH

NA

BL

HV02

S/S JERSEY POLO W/ LACE UP PLACKET

- SELF COLLAR
- CAP SLEEVE / OPEN CUFF
- DTM GROMMET LACE UP PLACKET
- DECORATIVE NECK TRIM
- COTTON BLEND JERSEY

STYLE	WH	MSRP
T2HV02 4-6X	P	\$26.00
T3HV02 7-16	P	\$26.00



WH

1760 S/S JERSEY POLO W/ RHINESTONE COLLAR

- SELF A COLLAR
- CAP SLEEVE W/ SELF BINDING EDGE & KEY HOLE DETAIL
- 2 HOLE ROUND PEARLIZED BUTTON
- COLLAR W/ RHINESTONE DETAIL
- DECORATIVE NECK TRIM
- COTTON BLEND JERSEY

STYLE	WH	NA	BL	MSRP
T21760 4-6X	P	P	P	\$26.00
T31760 7-16	P	P	P	\$26.00



WH

NA

BL

HV44 S/S JERSEY POLO W/ RHINESTONE POCKET

- SELF A COLLAR
- CAP SLEEVE W/ SELF BINDING EDGE & KEY HOLE DETAIL
- 2 HOLE ROUND PEARLIZED BUTTON
- POCKET W/ RHINESTONE DETAIL
- DECORATIVE NECK TRIM
- COTTON BLEND JERSEY

STYLE	WH	NA	MSRP
T2HV44 4-6X	P	P	\$26.00
T3HV44 7-16	P	P	\$26.00



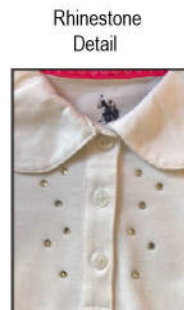
WH

NA

HV93 S/S JERSEY POLO W/ RHINESTONE PLACKET

- SELF A COLLAR
- CAP SLEEVE W/ SELF BINDING EDGE & KEY HOLE DETAIL
- 2 HOLE ROUND PEARLIZED BUTTON
- PLACKET W/ RHINESTONE TRIM
- DECORATIVE NECK TRIM
- COTTON BLEND JERSEY

STYLE	WH	NA	MSRP
T2HV93 4-6X	S	S	\$26.00
T3HV93 7-16	S	S	\$26.00



WH

NA

* NEW BY SIZE

7423
S/S JERSEY LACE UP POLO TOP

NEW

- SELF A COLLAR
- CAP SLEEVE OPEN CUFF
- 2 HOLE ROUND PEARLIZED BUTTON
- NONFUNCTIONAL SELF LACE UP TIES
- SATIN NECK TRIM
- COTTON BLEND JERSEY



WH

NA

STYLE	WH	NA	MSRP
T27423 4-6X	P	P	\$26.00
T37423 7-16	P	P	\$26.00

7510
S/S JERSEY POLO W/ BOW POCKET

NEW

- SELF A COLLAR
- CAP SLEEVE / OPEN CUFF
- 2 HOLE ROUND PEARLIZED BUTTON
- POCKET WITH SELF BOW DETAIL
- SATIN NECK TRIM
- COTTON BLEND JERSEY



WH

NA

RD

BL

STYLE	WH	NA	RD	BL	MSRP
T27510 4-6X	P	P	P	P	\$26.00
T37510 7-16	P	P	P	P	\$26.00

7425
S/S JERSEY POLO W/ BOW POCKET

NEW

- SELF A COLLAR
- CAP SLEEVE / OPEN CUFF W/ RHINESTONE BUTTON
- 4 HOLE ROUND PEARLIZED BUTTON
- SELF FABRIC BINDING
- COTTON BLEND JERSEY

18L Clear Rhinestone Button



WH

STYLE	WH	MSRP
T27425 4-6X	P	\$26.00
T37725 7-16	P	\$26.00

7543

S/S PERFORMANCE POLO TOP

NEW

- SELF COLLAR
- CAP SLEEVE OPEN CUFF
- NO BUTTON PLACKET
- SELF FABRIC BINDING
- SIDE SLITS
- POLY PIQUE

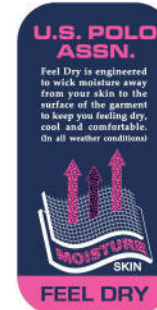


WH

NA

RD

BL



STYLE	WH	NA	RD	BL	MSRP
T27543 4-6X	P	P	P	P	\$24.00
T37543 7-16	P	P	P	P	\$24.00

7519

L/S INTRLOCK POLO W/ PICOT TRIM

NEW CORE

- FLAT KNIT COLLAR W/ PICOT TRIM
- 1 X 1 RIB CUFF
- FLOWER BUTTON
- CONTRAST NECK TRIM
- COTTON BLEND INTERLOCK



WH

NA

RD

STYLE	WH	NA	RD	MSRP
T27519 4-6X	P	P	P	\$26.00
T37519 7-16	P	P	P	\$26.00

HV07 FRONT TIE TOP

- SELF COLLAR
- CUFFED SLEEVE
- 2 HOLE ROUND PEARLIZED BUTTON
- SELF FRONT TIE
- SATIN NECK TRIM
- COTTON BLEND



WH

STYLE	WH	MSRP
M2HV07 4-6X	P	\$26.00
M3HV07 7-16	P	\$26.00

HV68 RHINESTONE POCKET TOP

- SELF COLLAR
- LONG SLEEVES
- 2 HOLE ROUND PEARLIZED BUTTON
- RHINETONE ON POCKETS
- SATIN NECK TRIM
- COTTON BLEND

Rhinestone
Detail



WH

STYLE	WH	MSRP
M2HV68 4-6X	P	\$28.00
M3HV68 7-16	P	\$28.00

7408 S/S STRETCH OXFORD TOP

NEW

- SELF COLLAR
- SHORT SLEEVES
- 2 HOLE ROUND PEARLIZED BUTTON
- BUTTON DOWN COLLAR
- FRONT AND BACK DARTS
- STRETCH OXFORD



WH

BL

STYLE	WH	BL	MSRP
M27408 4-6X	S	P	\$26.00
M37408 7-16	S	P	\$26.00
M17408 18-20	S	P	\$26.00

7430

FRONT TIE TOP

NEW

- SELF COLLAR
- FAUX ROLL UP SLEEVE W/ TAB
- 4 HOLE BUTTON
- SELF FRONT TIE
- SATIN NECK TRIM
- COTTON BLEND



WH

STYLE	WH	MSRP
M27430 4-6X	P	\$26.00
M37430 7-16	P	\$26.00

7434

HIDDEN BUTTON TOP

NEW

- SELF COLLAR
- OPEN CUFF
- HIDDEN PLCKET
- NAVY PIPING DOWN CF PLACKET
- SELF NECK TRIM
- COTTON BLEND



WH

STYLE	WH	MSRP
M27434 4-6X	P	\$26.00
M37434 7-16	P	\$26.00

HV50 CARDIGAN SWEATER

- BUTTON FRONT
- DIAMOND CABLE & POPCORN KNIT FRONT
- PATCH POCKETS
- CONTRAST NECK TRIM
- COTTON / ACRYLIC BLEND

STYLE	NA	MSRP
W2HV50 4-6X	S	\$32.00
W3HV50 7-16	S	\$32.00

* NEW BY SIZE



NA

L441 FULL ZIP CABEL KNIT SWEATER

- FULL ZIP
- CABLE/ JERSEY KNIT
- CONTRAST NECK TRIM
- COTTON / ACRYLIC BLEND

STYLE	NA	MSRP
W2L441 4-6X	P	\$32.00
W3L441 7-16	P	\$32.00



NA

7478 CARDIGAN SWEATER

NEW

- BUTTON FRONT
- 7GG POPCORN KNIT
- 1/2" DTM TAPE LACE UP SIDES W/ GROMMET DETAIL
- SATIN NECK TRIM
- COTTON / ACRYLIC BLEND

STYLE	NA	MSRP
W27478 4-6X	P	\$32.00
W37478 7-16	P	\$32.00



NA

7480

ZIP FRONT HOODED CABEL KNIT SWEATER

NEW

- ZIP FRONT
- 1" & 2" CABLE KNIT
- KANGAROO POCKET
- HIGH / LOW HEM
- COTTON / ACRYLIC BLEND



NA

STYLE	NA	MSRP
W27480 4-6X	P	\$32.00
W37480 7-16	P	\$32.00

CK36

BERMUDA SHORT

- BERMUDA FIT
- DECORATIVE FRONT POCKET
- 4 HOLE ROUND DTM BUTTON
- PRINTED / SELF REVERSIBLE BELT
- SIDE SLIT W/ LOOP CLOSURE
- COTTON BLEND TWILL
- ADJUSTABLE ELASTIC INSIDE W.B.

STYLE	NA	KH	MSRP
S2CK36 4-6X	P	P	\$28.00
S3CK36 7-16	P	P	\$28.00



NA

KH

HV73

STRETCH BERMUDA SHORT

- BERMUDA FIT
- SLASH FRONT POCKET
- 4 HOLE ROUND DTM BUTTON
- PRINTED INSIDE W.B.
- COTTON BLEND STRETCH TWILL
- ADJUSTABLE ELASTIC INSIDE W.B.

STYLE	NA	KH	MSRP
S2HV73 4-6X	S	S	\$28.00
S3HV73 7-16	S	S	\$28.00



NA

KH

* NEW BY SIZE

7486
TWILL BERMUDA SHORT

NEW

- BERMUDA FIT
- SLASH FRONT POCKET
- ELASTIC INSIDE RIB W.B. W/ NONFUNCTIONAL LACE UP
- TACKED DOWN CUFF
- COTTON BLEND TWILL.



NA

KH

STYLE	NA	KH	MSRP
S27486 4-6X	P	P	\$28.00
S37486 7-16	P	P	\$28.00

HV39
STRETCH BERMUDA SHORT

NEW

- BERMUDA FIT
- WELT FRONT POCKET
- ELASTIC INSIDE Y/D STRIPE RIB W.B. W/ TIE FRONT
- TACKED DOWN CUFF
- COTTON BLEND TWILL.



NA

KH

STYLE	NA	KH	MSRP
S2HV39 4-6X	P	P	\$28.00
S3HV39 7-16	P	P	\$28.00

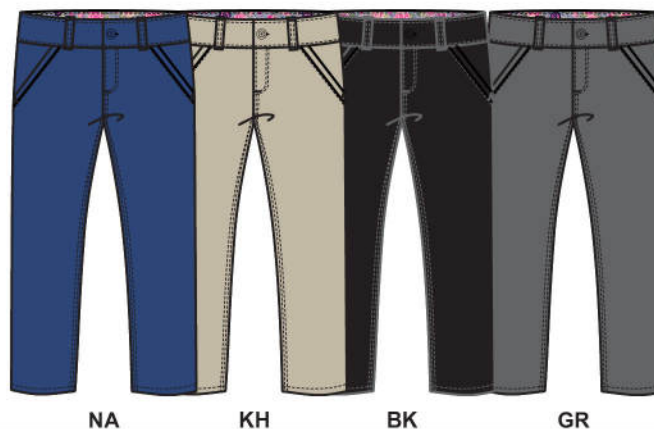
NEW

JV32

BASIC SKINNY STRETCH TWILL PANT

- COTTON BLEND STRETCH TWILL - 3% SPANDEX
- SKINNY FIT
- SIDE SLASH POCKETS W/ SELF PIECING DETAIL
- 4 HOLE ROUND DTM BUTTON
- PRINTED INSIDE W.B.
- ADJUSTABLE ELASTIC INSIDE W.B.

STYLE	NA	KH	BK	GR	MSRP
E2JV32 4-6X	S	S	P	S	\$32.00
E3JV32 7-16	S	S	P	S	\$32.00
E1JV32 18-20	S	S	P	S	\$32.00
E8JV32 10.5-20.5	S	S	P	P	\$34.00



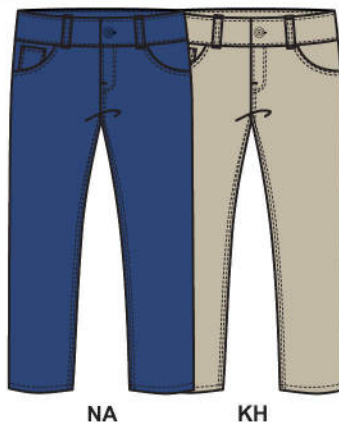
2113

5 POCKET SKINNY STRETCH TWILL PANT

- COTTON BLEND STRETCH TWILL - 3% SPANDEX
- SKINNY FIT
- 5 POCKET / BACK YOKE
- 4 HOLE ROUND DTM BUTTON
- ADJUSTABLE ELASTIC INSIDE W.B.

STYLE	NA	KH	MSRP
E22113 4-6X	P	P	\$32.00
E32113 7-16	P	P	\$32.00

* NEW BY SIZE



JV31

TWILL SLIM STRAIGHT PANT

- COTTON BLEND TWILL
- SLIM STRAIGHT FIT
- SIDE SLASH POCKETS W/ SELF PIECING DETAIL
- 4 HOLE ROUND DTM BUTTON
- PRINTED INSIDE W.B.
- ADJUSTABLE ELASTIC INSIDE W.B.

STYLE	NA	KH	BK	GR	MSRP
E2JV31 4-6X	S	S	S	P	\$32.00
E3JV31 7-16	S	S	S	P	\$32.00
E8JV31 10.5-20.5	P				\$34.00
E6JV31 Jrs (XS-XXL)	S	S	S		\$36.00
E1JV31 18-20	P	P			\$32.00



1812 Twill Jogger

- COTTON BLEND TWILL
- JOGGER
- NON FUNCTIONAL DRAWCORD
- ELASTIC W.B.



NA

KH

STYLE	NA	KH	MSRP
E21812 4-6X	P	P	\$32.00
E31812 7-16	P	P	\$32.00

7473 Twill Jogger

NEW

- COTTON BLEND TWILL
- JOGGER
- RIB W.B. W/ NONFUNCTIONAL SELF LACE UP TIES
- ELASTIC W.B.



NA

STYLE	NA	MSRP
E27473 4-6X	P	\$32.00
E37473 7-16	P	\$32.00

7503 PONTI SKINNY PANT

NEW

- PONTI
- SKINNY FIT
- FAUX FRONT POCKETS W/ REAL COIN POCKET
- BACK YOKE W/ FUNCTIONAL BK POCKETS
- 4 HOLE ROUND DTM BUTTON W/ SILVER RIM
- ADJUSTABLE ELASTIC INSIDE W.B.



NA

KH

STYLE	NA	KH	MSRP
E27503 4-6X	P	P	\$32.00
E37503 7-16	P	P	\$32.00



PB12

MOCK WRAP **POLY** SCOOTER

- SCOOTER
- PLEATED ALL AROUND
- MOCK WRAP
- INSIDE DECORATIVE PRINTED W.B.
- KNIT SHORT FOR COMFORT
- POLYESTER



NA

KH

STYLE	NA	KH	MSRP
K2PB12 4-6X	S	S	\$28.00
K3PB12 7-16	S	S	\$28.00
K1PB12 18-20	S	S	\$28.00

HV12

EXPOSED ZIPPER PLEATED **POLY** SCOOTER

- SCOOTER
- EXPOSED SIDE ZIPPER
- PRINTED INSIDE W.B.
- ALL AROUND PLEATS
- KNIT SHORT FOR COMFORT
- POLYESTER



NA

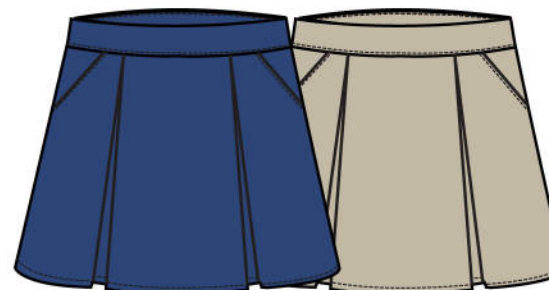
KH

STYLE	NA	KH	MSRP
K2HV12 4-6X	P	P	
K3HV12 7-16	P	P	

HV71

ACTIVE KICK PLEAT **POLY** SCOOTER

- SCOOTER
- SLASH FRONT POCKETS
- FRONT PLEATS
- KNIT SHORT FOR COMFORT
- POLYESTER



NA

KH

STYLE	NA	KH	MSRP
K2HV71 4-6X	P	P	
K3HV71 7-16	P	P	

PQ63
CONTRAST HEM PLEATED POLY SCOOTER

- SCOOTER
- BUCKLES AT WAISTBAND
- INSIDE DECORATIVE PRINTED W.B.
- KNIT SHORT FOR COMFORT
- POLYESTER

STYLE	NA	KH	MSRP
K2PQ63 4-6X	P	P	\$28.00
K3PQ63 7-16	P	P	\$28.00



NA

KH

7442
TIE FRONT POLY SCOOTER

NEW

- SCOOTER
- TIES AT WAISTBAND
- KNIT SHORT FOR COMFORT
- POLYESTER

STYLE	NA	KH	MSRP
K27442 4-6X	P	P	\$28.00
K37442 7-16	P	P	\$28.00



NA

KH

7539

2 TAB POLY SKORT

NEW

- SKORT
- PLEATED FRONT DETAIL
- DECORATIVE TAB
- HALF BACK ELASTIC W.B.
- SIDE ZIP CLOSURE
- POLYESTER

STYLE	NA	KH	BK	GR	MSRP
K27539 4-6X	S	P	P	P	\$28.00
K37539 7-16	S	P	P	P	\$28.00
K17539 18-20	P	P	P	P	\$28.00



NA

KH

BK

GR

7448

2 TAB POLY SKIRT

NEW

- SKIRT
- PLEATED ALL AROUND
- WHITE GROSGRAIN RIBBON
- HALF BACK ELASTIC W.B.
- SIDE ZIP CLOSURE
- POLYESTER

STYLE	NA	MSRP
K27448 4-6X	P	\$28.00
K37448 7-16	P	\$28.00



NA

HV13 REVERSIBLE BELT TWILL SCOOTER

- SCOOTER
- SLASH FRONT POCKETS
- PRINTED REVERSIBLE BELT
- FRONT KICK PLEATS
- KNIT SHORT FOR COMFORT
- COTTON BLEND TWILL



NA

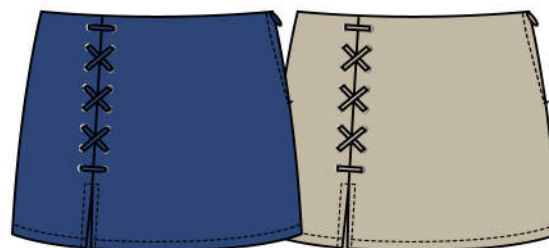
KH

STYLE	NA	KH	MSRP
K2HV13 4-6X	P	P	\$28.00
K3HV13 7-16	P	P	\$28.00

7444 SATIN LACE UP TWILL SCOOTER

NEW

- SCOOTER
- SATIN SIDE LACE UP W/ GROMMETS
- SMALL FRONT PLEAT
- KNIT SHORT FOR COMFORT
- COTTON BLEND TWILL



NA

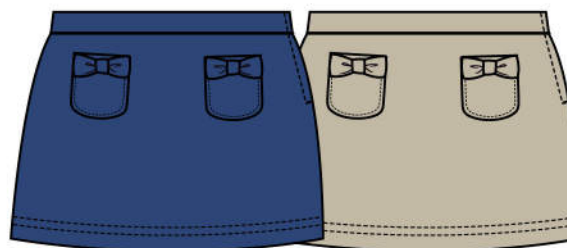
KH

STYLE	NA	KH	MSRP
K27444 4-6X	P	P	\$28.00
K37444 7-16	P	P	\$28.00

7509 BOW POCKET PONTI SCOOTER

NEW

- SKORT
- BOW POCKET FRONT DETAIL
- SIDE ZIP CLOSURE
- PONTI



NA

KH

STYLE	NA	KH	MSRP
K27509 4-6X	P	P	\$28.00
K37509 7-16	P	P	\$28.00

S180
ANGELED PLEAT HEM W/ REVERSIBLE BELT TWILL JUMPER

- ALL AROUND ANGLED PLEAT HEM
- REVERSIBLE PRINTED BELT
- CONTRAST NECK TRIM
- COTTON BLEND TWILL



NA

KH

STYLE	NA	KH	MSRP
A2S180 4-6X	P	P	\$30.00
A3S180 7-16	P	P	\$30.00

HV24
A-LINE DROP WAIST TWILL JUMPER

- ALL AROUND PLEAT HEM
- CONTRAST BOW DETAIL
- A-LINE SHAPE
- SATIN NECK TRIM
- COTTON BLEND TWILL



NA

STYLE	NA	MSRP
A2HV24 4-6X	P	\$30.00
A3HV24 7-16	P	\$30.00

F294

PLEATED **POLY** JUMPER

- ALL AROUND PLEAT HEM
- SELF DECORATIVE TABS AT WAIST
- CONTRAST NECK TRIM
- 100% POLYESTER



NA

KH

STYLE	NA	KH	MSRP
A2F294 4-6X	S	S	\$30.00
A3F294 7-16	S	S	\$30.00
A8F294 10.5-20.5	P	P	\$32.00

1790

CONTRAST PIPING **POLY** JUMPER

- FRONT KICK PLEATS
- CONTRAST PIPING AT THE DROP WAIST
- CONTRAST NECK TRIM
- 100% POLYESTER



NA

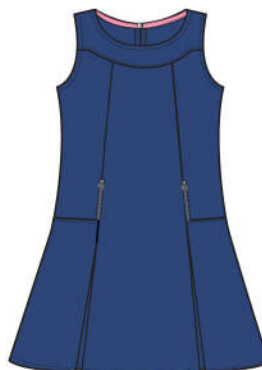
STYLE	NA	KH	MSRP
A21790 4-6X	P	P	\$30.00
A31790 7-16	P	P	\$30.00

7493

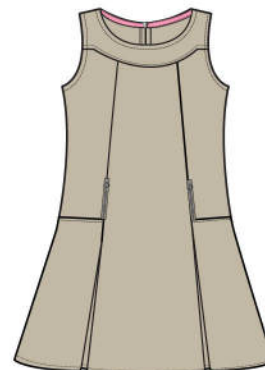
SEAM ZIPPER POLY DRESS **NEW**

- FRONT SEAM DETAIL WITH PLEATS
- EXPOSED ZIPPER IN SEAM DETAIL
- CONTRAST NECK TRIM
- POLYESTER

STYLE	NA	KH	MSRP
A27493 4-6X	P	P	\$30.00
A37493 7-16	P	P	\$30.00



NA



KH

7494

PLEATED HEM WITH BUTTON DETAIL POLY DRESS **NEW**

- PLEATED HEM WITH BUTTON DETAIL
- CONTRAST NECK TRIM
- PRINCESS SEAMS ON FRONT
- POLYESTER

STYLE	NA	KH	MSRP
A27494 4-6X	P	P	\$30.00
A37494 7-16	P	P	\$30.00



NA



KH

7508

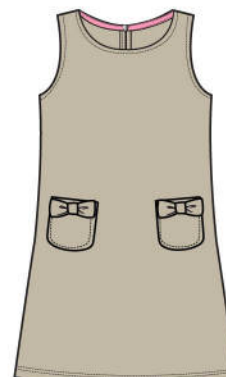
RIBBON POCKET PONTI DRESS **NEW**

- RIBBON POCKET FRONT DETAIL
- CONTRAST NECK TRIM
- PONTI

STYLE	NA	KH	MSRP
A27508 4-6X	P	P	\$30.00
A37508 7-16	P	P	\$30.00



NA



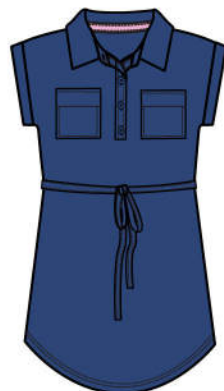
KH

HV37

SELF BELT WOVEN DRESS

- COTTON BLEND WOVEN
- MOCK SLEEVE CUFF
- SELF BELT
- 2 HOLE ROUND PEARLIZED BUTTON
- PATCH POCKET W/ FLAP
- CONTRAST NECK TRIM

STYLE	NA	MSRP
A2HV374-6X	P	\$30.00
A3HV37 7-16	P	\$30.00



NA

R004

DROP WAIST KNIT DRESS W/ CONTRAST COLLAR

- ALL AROUND PLEAT HEM
- CONTRAST PLACKET & COLLAR
- CONTRAST PIPING AT DROP WAIST
- CONTRAST NECK TRIM
- COTTON JERSEY

STYLE	NA	MSRP
A2R004 4-6X	P	\$30.00
A3R004 7-16	P	\$30.00



NA

7491

DROP WAIST KNIT DRESS

NEW

- ALL AROUND RUFFLE HEM
- OPEN CUFF CAP SLEEVES
- FLAT KNIT RIB COLLAR & DTM BUTTON PLACKET
- DTM NECK TRIM
- COTTON PIQUE

STYLE	NA	MSRP
A27491 4-6X	P	\$30.00
A37491 7-16	P	\$30.00



NA

6617

S/S PIQUE POLO TOP

CORE

- COTTON BLEND PIQUE
- FLAT KNIT COLOR
- 1 X 1 RIB CUFF
- 2 - BUTTON PLACKET
- SELF NECK TAPNG

STYLE	WH	NA	RD	BL	RO	GD	YE	BU	PU	HU	BK	GR	MSRP
T56617 4-7	S	S	P	P	P	P	P	P	P	P	P	P	\$24.00
T76617 8-16	S	S	P	P	P	P	P	P	P	P	P	P	\$24.00
T16617 18-20	P	P		P			P						\$24.00
T96617 HUSKY	S	S		P									\$26.00



WH NA RD BL



RO GD YE BU PU HU BK GR

***ALL BOYS POLO SPECS HAVE A NEW MODERN FIT**

U.S. POLO ASSN.

SINCE 1890



**NEW
CORE**

**7520
S/S PIQUE POLO TOP**

- COTTON BLEND PIQUE
- FLAT KNIT COLOR
- 1 X 1 RIB CUFF
- 3 - BUTTON PLACKET
- SELF NECK TAPNG
- TAIL DROP

STYLE	WH	NA	RD	BL	GD	YE	BU	HU	BK	GR	RO	PU	MSRP
T57520* XS-S	S	S	S	S	P	P	S	P	P	P	P	P	\$24.00
T77520* M-XL	S	S	S	S	P	P	S	P	P	P	P	P	\$24.00
T17520* XXL	P	P	P	P	P								\$24.00
T97520 HUSKY	P	P	P	P		P	P			P			\$26.00



WH NA RD BL

* NOTE: ONLY FOR 7520 SIZE & ASSORTMENT IS CALLED OUT BELOW



GD YE BU HU BK GR RO PU

* SIZE	*ASSORTMENT
XS-S XS (4/5) - S (6/7)	10-14
M-XL M (8) - L (10/12) - XL (14/16)	10-8-6
XXL XXL (18-20)	12

7544

S/S PERFORMANCE POLO TOP

NEW

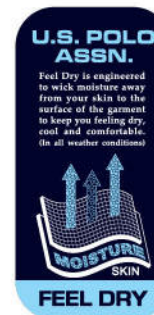
- POLY KNIT
- FLAT KNIT COLOR
- OPEN CUFF
- 2 - BUTTON PLACKET
- SELF NECK TAPNG
- TAIL DROP



WH

NA

RD



STYLE	WH	NA	RD	MSRP
T57544 4-7	P	P	P	\$24.00
T77544 8-16	P	P	P	\$24.00

6615

L/S PIQUE POLO TOP

- COTTON BLEND PIQUE
- FLAT KNIT COLOR
- 1X1 RIB CUFF
- 2 - BUTTON PLACKET
- SELF NECK TAPNG



WH

NA

STYLE	WH	NA	MSRP
T56615 4-7	P	P	\$26.00
T76615 8-16	P	P	\$26.00

6703

S/S DRESS SHIRT

- BACK PLEAT
- EXPANDABLE COLLAR
- 4 - HOLE PEARLIZED BUTTON
- FRONT PATCH POCKET
- PLEAT AT SLEEVE W/ ADJUSTABLE CUFF
- TAIL HEM
- COTTON BLEND BROADCLOTH



WH

YE

STYLE	WH	YE	MSRP
M56703 4-7	P	P	\$28.00
M76703 8-16	P	P	\$28.00

7416

NEW

S/S OXFORD SHIRT

- EXPANDABLE COLLAR
- 4 - HOLE PEARLIZED BUTTON
- FRONT PATCH POCKET
- TAIL HEM
- COTTON BLEND OXFORD



WH

BL

STYLE	WH	BL	MSRP
M57416 4-7	S	S	\$28.00
M77416 8-16	S	S	\$28.00

**6596
CABEL KNIT SWEATER VEST**

- V-NECK
- CABLE/ JERSEY KNIT
- 2 X 2 RIB AT NECK & ARMHOLES
- COTTON / ACRYLIC BLEND

STYLE	NA	MSRP
V56596 4-7	P	\$30.00
V76596 8-16	P	\$30.00



NA

**6608
V-NECK CARDIGAN**

- V-NECK CARDIGAN JERSEY KNIT
- FRONT WELT POCKETS
- 1 X 1 RIB CUFF & HEM
- COTTON / ACRYLIC BLEND

STYLE	NA	MSRP
W56608 4-7	P	\$34.00
W76608 8-16	P	\$34.00



NA

**7536
V-NECK CARDIGAN**

- V-NECK CARDIGAN POPCORN KNIT 5GG
- FRONT WELT POCKETS & 30L HORN BUTTONS
- 1 X 1 RIB CUFF & HEM
- COTTON / ACRYLIC BLEND

STYLE	NA	MSRP
W57536 4-7	P	\$34.00
W77536 8-16	P	\$34.00



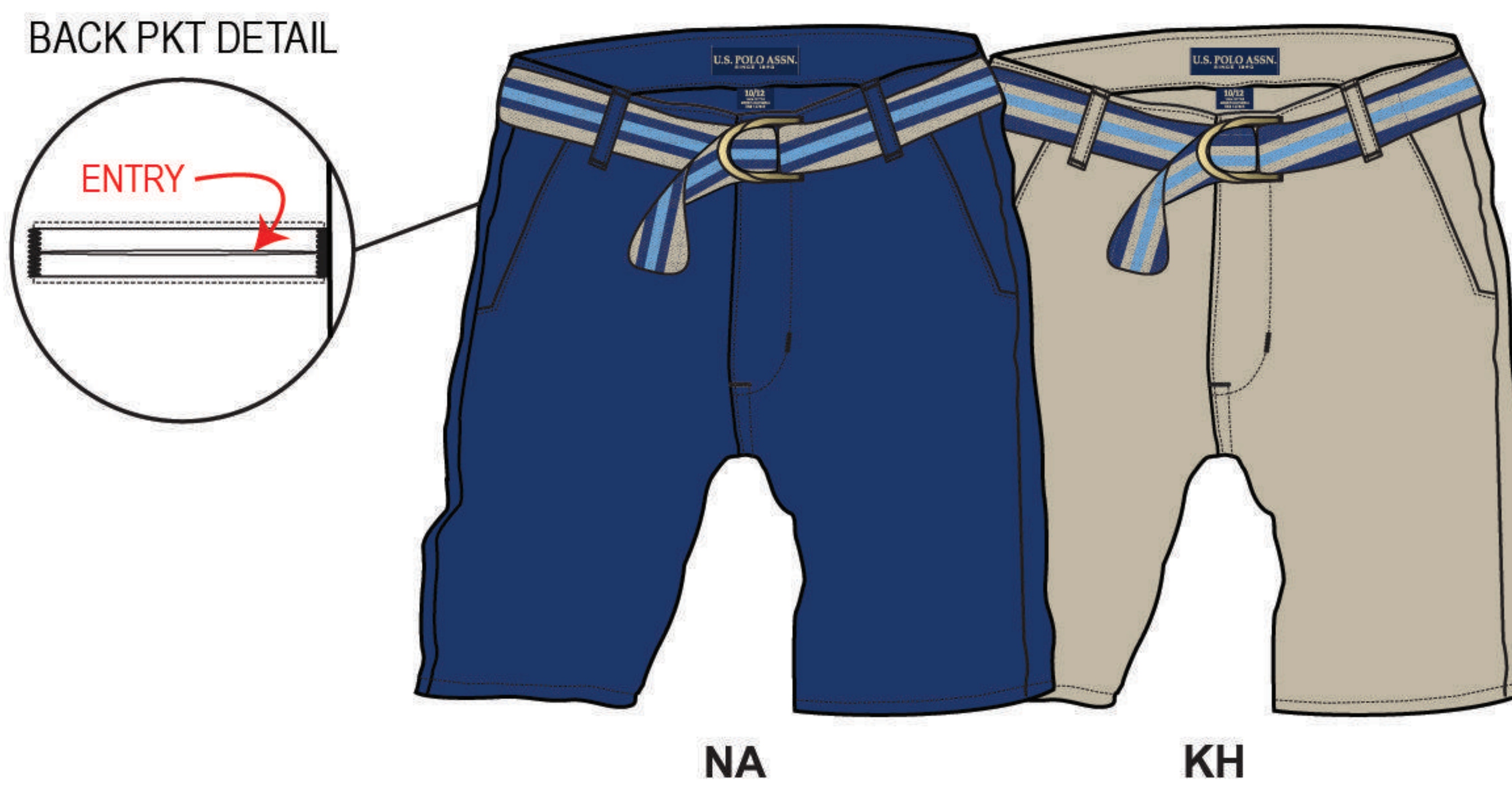
NA



1876 BELTED FLAT FRONT SHORT

- BELTED
- ADJUSTABLE WAIST
- FLAT FRONT
- 2 SLASH POCKETS
- 4 - HOLE BUTTON CLOSURE
- UTILITY POCKET
- COTTON BLEND TWILL

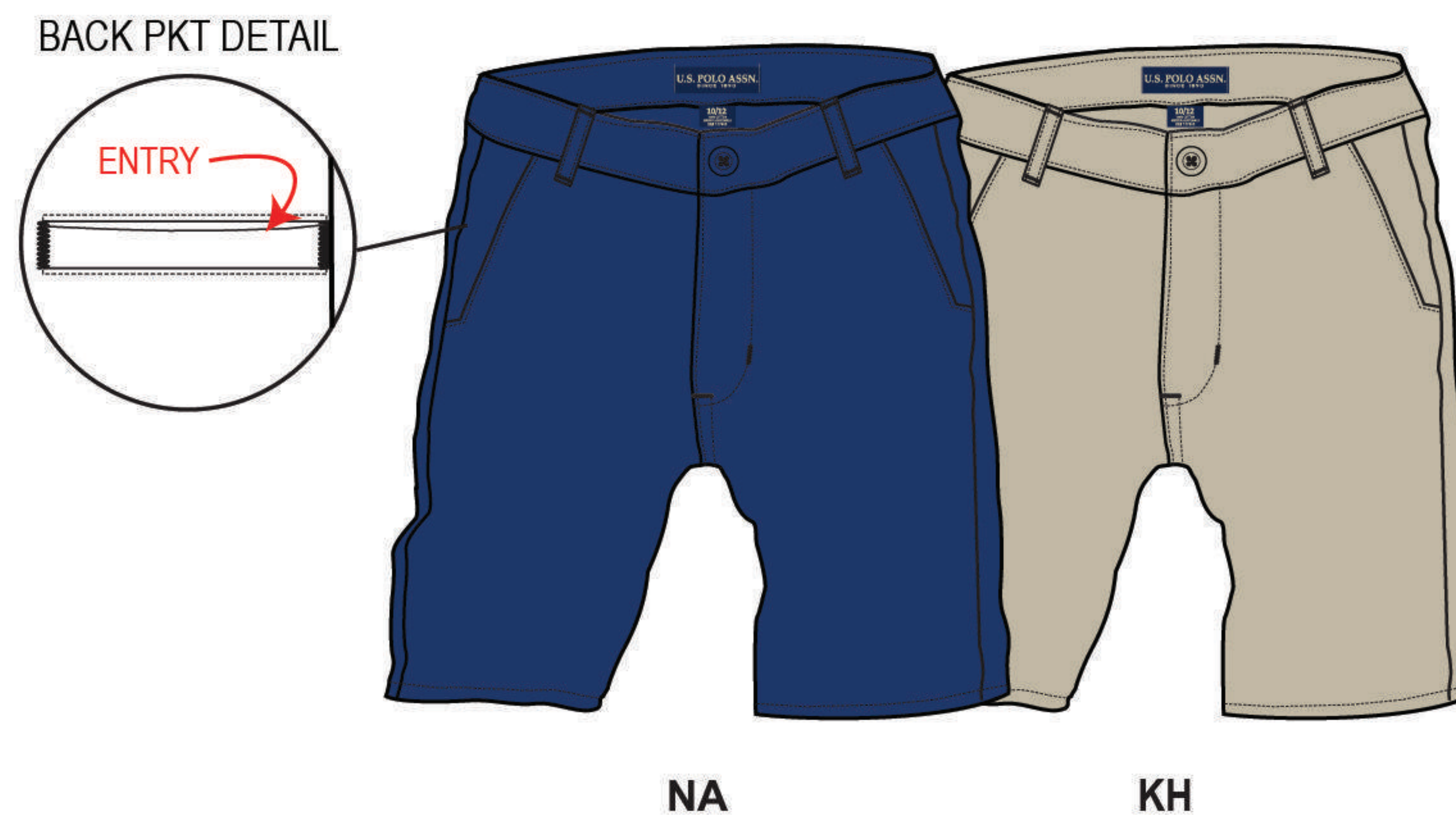
STYLE	NA	KH	MSRP
S51876 4-7	P	P	\$32.00
S71876 8-16	P	P	\$32.00



IB52 FLAT FRONT SHORT

- ADJUSTABLE WAIST
- FLAT FRONT
- 2 SLASH POCKETS
- 4 - HOLE BUTTON CLOSURE
- UTILITY POCKET
- COTTON BLEND TWILL

STYLE	NA	KH	MSRP
S5IB52 4-7	S	S	\$30.00
S7IB52 8-16	S	S	\$30.00
S9IB52 HUSKY	S	S	\$32.00
S11IB52 18-20	S	S	\$30.00



* NEW BY SIZE

9854 * New Modern Fit

FLAT FRONT TWILL PANT

- COTTON BLEND TWILL
- ADJUSTABLE WAIST
- FLAT FRONT
- 2 SLASH POCKETS
- HOOK & BAR CLOSURE

STYLE	NA	KH	BK	GR	MSRP
E59854 4-7	S	S	S	S	\$32.00
E79854 8-16	S	S	S	S	\$32.00
E19854 18-20	P	P		P	\$32.00
E99854 HUSKY	P	P			\$34.00



NA KH BK GR

9855 * New Modern Fit

FLAT FRONT TWILL PANT

NEW

- COTTON BLEND TWILL - 3% SPANDEX
- ADJUSTABLE WAIST
- FLAT FRONT
- 2 SLASH POCKETS
- HOOK & BAR CLOSURE

STYLE	NA	KH	BK	GR	MSRP
E59855 4-7	S	S	S	S	\$32.00
E79855 8-16	S	S	S	S	\$32.00
E19855 18-20	P	P		P	\$32.00
E99855 HUSKY	P	P			\$34.00



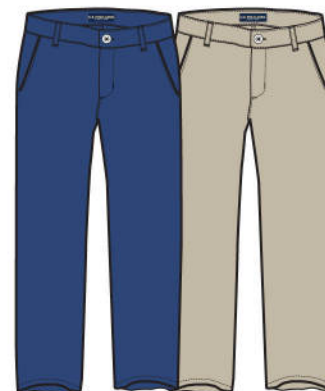
NA KH BK GR

VV74 * New Fit

SKINNY FIT TWILL PANT

- COTTON BLEND TWILL
- SKINNY FIT
- ADJUSTABLE WAIST
- FLAT FRONT
- 2 SLASH POCKETS
- BUTTON CLOSURE

STYLE	NA	KH	MSRP
E5VV74 4-7	P	P	\$32.00
E7VV74 8-16	P	P	\$32.00

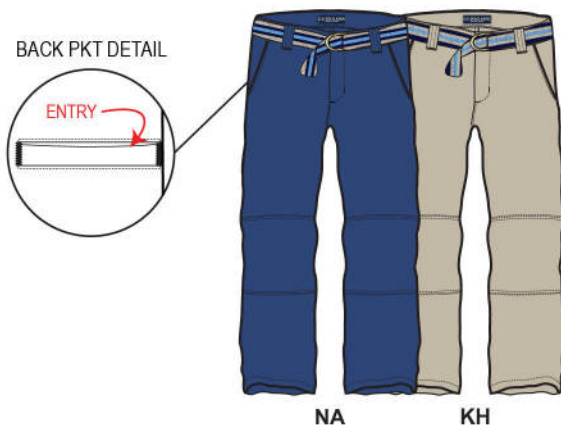


NA KH



1877 BELTED UTILITY POCKET TWILL PANT

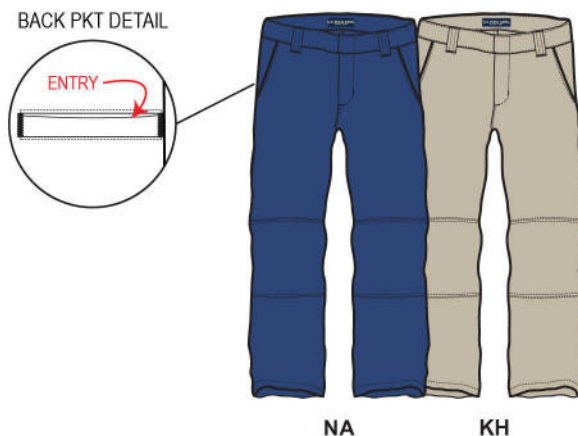
- COTTON BLEND TWILL
- BELTED
- ADJUSTABLE WAIST
- FLAT FRONT
- 2 SLASH POCKETS
- HOOK & BAR CLOSURE
- UTILITY POCKET



STYLE	NA	KH	MSRP
E51877 4-7	P	P	\$34.00
E71877 8-16	P	P	\$34.00

8918 UTILITY POCKET TWILL PANT

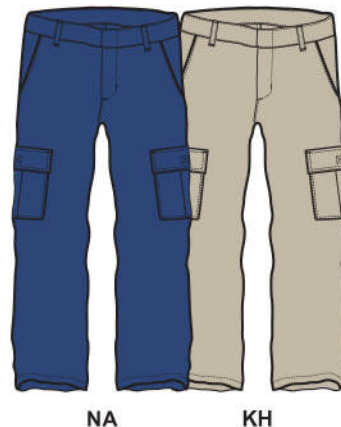
- COTTON BLEND TWILL
- ADJUSTABLE WAIST
- FLAT FRONT
- 2 SLASH POCKETS
- HOOK & BAR CLOSURE
- UTILITY POCKET



STYLE	NA	KH	MSRP
E58918 4-7	P	P	\$32.00
E78918 8-16	P	P	\$32.00

6865 FLAT FRONT TWILL CARGO

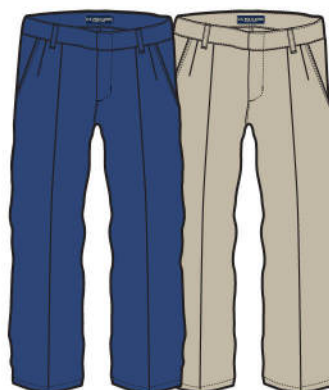
- COTTON BLEND TWILL
- ADJUSTABLE WAIST
- 2 SLASH POCKETS
- 2 SIDE CARGO PKTS
- HOOK & BAR CLOSURE



STYLE	NA	KH	MSRP
E56865 4-7	P	P	\$32.00
E76865 8-16	P	P	\$32.00

1913 * *New Modern Fit* PLEATED FRONT TWILL PANT

- COTTON BLEND TWILL
- ADJUSTABLE WAIST
- PLEATED FRONT
- 2 SLASH POCKETS
- HOOK & BAR CLOSURE



NA

KH

STYLE	NA	KH	MSRP
E51913 4-7	P	P	\$32.00
E71913 8-16	P	P	\$32.00

1872 SKINNY FIT 5 POCKET TWILL PANT

- COTTON BLEND TWILL
- SKINNY FIT
- ADJUSTABLE WAIST
- FLAT FRONT
- 5 POCKET
- BUTTON CLOSURE



NA

KH

BK

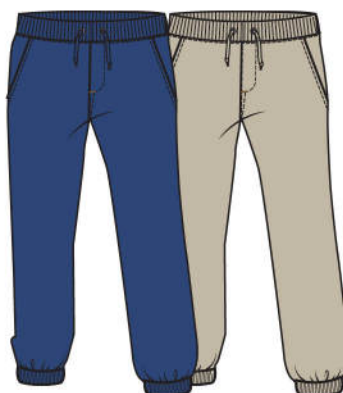
STYLE	NA	KH	BK	MSRP
E51872 4-7	P	P	P	\$32.00
E71872 8-16	P	P	P	\$32.00

7531

TWILL JOGGER PANT W/ RIB W.B.

NEW

- COTTON BLEND TWILL
- JOGGER FIT
- RIB WAISTBAND
- SLASH FRONT POCKET
- 2 BACK DOUBLE WELT PKTS



NA

KH

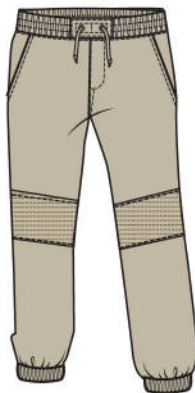
STYLE	NA	KH	MSRP
E57531 4-7	P	P	\$32.00
E77531 8-16	P	P	\$32.00

7541

TWILL JOGGER PANT

NEW

- COTTON BLEND TWILL
- JOGGER FIT
- COVERED ELASTIC WAISTBAND
- SLASH FRONT POCKET
- SINGLE BACK PATCH PKT



KH

STYLE	KH	MSRP
E57541 4-7	P	\$32.00
E77541 8-16	P	\$32.00

HV98

STRETCH TWILL JOGGER PANT

NEW

- COTTON BLEND STRETCH TWILL
- JOGGER FIT
- COVERED ELASTIC WAISTBAND
- SLASH FRONT POCKET
- SINGLE BACK PATCH PKT



NA

KH

GR

STYLE	NA	KH	GR	MSRP
E5HV98 4-7	P	P	P	\$32.00
E7HV98 8-16	P	P	P	\$32.00
E1HV98 18-20	P	P	P	\$32.00



**7521
FLEECE JACKET**

NEW

- COTTON BLEND FLEECE
- ZIPPER FRONT
- KANGAROO POCKET
- SELF NECK TAPING
- RIB AT CUFF & HEM



NA

HG

STYLE	NA	HG	MSRP
F57521 4-7	P	P	\$32.00
F77521 8-16	P	P	\$32.00

**7550
FLEECE PANT**

NEW

- COTTON BLEND FLEECE
- ELASTIC W.B.
- SIDE POCKETS



NA

HG

STYLE	NA	HG	MSRP
E57550 4-7	P	P	\$28.00
E77550 8-16	P	P	\$28.00

9851

S/S JERSEY POLO W/ PICOT EDGE

- FLAT KNIT COLLAR W/ PICOT TRIM
- OPEN CUFF W/ PICOT TRIM EGDE
- FLOWER BUTTON
- COTTON BLEND JERSEY



RD BL

STYLE	RD	BL	MSRP
T49851 2T-4T	P	P	\$22.00

IF89

S/S INTERLOCK POLO W/ PICOT EDGE

NEW CORE

- FLAT KNIT COLLAR W/ PICOT TRIM
- 1 X 1 RIB CUFF
- FLOWER BUTTON
- CONTRAST NECK TRIM
- COTTON BLEND INTERLOCK



WH NA RD BL GD

STYLE	WH	NA	RD	BL	GD	MSRP
T4IF89 2T-4T	S	S	S	S	S	\$22.00

HV50

CARDIGAN SWEATER

- BUTTON FRONT
- DIAMOND CABLE & POPCORN KNIT FRONT
- PATCH POCKETS
- CONTRAST NECK TRIM
- COTTON / ACRYLIC BLEND



NA

STYLE	NA	MSRP
W4HV50 2T-4T	S	\$30.00

HV73

STRETCH BERMUDA SHORT

NEW

- BERMUDA FIT
- SLASH FRONT POCKET
- 4 HOLE ROUND DTM BUTTON
- PRINTED INSIDE W.B.
- COTTON BLEND STRETCH TWILL
- PULL ON WAISTBAND

STYLE	NA	KH	MSRP
S4HV73 2T-4T	S	S	\$26.00



NA

KH

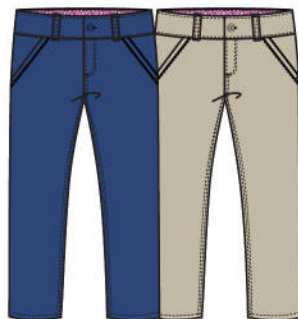
JV32

STRETCH TWILL STRAIGHT FIT PANT

NEW

- COTTON BLEND STRETCH TWILL - 3% SPANDEX
- STRAIGHT FIT
- SIDE SLASH POCKETS W/ SELF PIECING DETAIL
- 4 HOLE ROUND DTM BUTTON
- PRINTED INSIDE W.B.
- PULL ON WAISTBAND

STYLE	NA	KH	MSRP
E4JV32 -2T-4T	S	S	\$30.00



NA

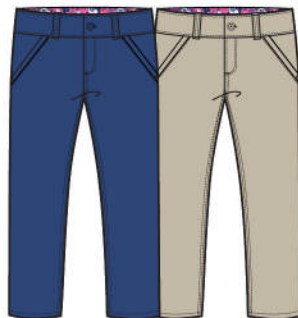
KH

JV31

TWILL PULL ON SLIM STRAIGHT PANT

- COTTON BLEND TWILL
- SLIM STRAIGHT FIT
- SIDE SLASH POCKETS W/ SELF PEICEING DETAIL
- 4 HOLE ROUND DTM BUTTON
- PRINTED INSIDE W.B.
- PULL ON WAISTBAND

STYLE	NA	KH	MSRP
E4JV31 -2T-4T	P	P	\$30.00



NA

KH

SM03

BOW DETAIL PLEATED POLY SCOOTER

- SCOOTER
- FRONT PLEATS
- SELF FRONT BOW DETAIL
- ELASTIC BACK
- KNIT SHORT FOR COMFORT
- POLYESTER

STYLE	NA	KH	MSRP
K4SM03 -2T-4T	S	S	\$26.00



NA

KH

SM07
BOTTOM PLEAT TWILL JUMPER

- ALL AROUND PLEAT HEM
- SELF TAPING & BOW DETAIL
- CONTRAST NECK TRIM
- COTTON BLEND TWILL

STYLE	NA	KH	MSRP
A4SM07 2T-4T	S	S	\$28.00



NA

KH

HV24
A-LINE DROP WAIST TWILL JUMPER

NEW

- ALL AROUND PLEAT HEM
- CONTRAST BOW DETAIL
- A-LINE SHAPE
- SATIN NECK TRIM
- COTTON BLEND TWILL

STYLE	NA	MSRP
A4HV24 2T-4T	P	\$28.00



NA

7491
DROP WAIST KNIT DRESS

NEW

- ALL AROUND RUFFLE HEM
- OPEN CUFF CAP SLEEVES
- FLAT KNIT RIB COLLAR & DTM BUTTON PLACKET
- DTM NECK TRIM
- COTTON PIQUE

STYLE	NA	MSRP
A47491 2T-4T	P	\$28.00



NA

6617

S/S PIQUE POLO

- COTTON BLEND PIQUE
- FLAT KNIT COLOR
- 1 X 1 RIB CUFF
- 2 - BUTTON PLACKET
- SELF NECK TAPNG



STYLE	WH	NA	RD	BL	MSRP
T46617 2T-4T	P	P	P	P	\$22.00

**NEW
CORE**

7520

S/S PIQUE POLO

- COTTON BLEND PIQUE
- FLAT KNIT COLOR
- 1 X 1 RIB CUFF
- 3 - BUTTON PLACKET
- SELF NECK TAPNG
- TAIL DROP

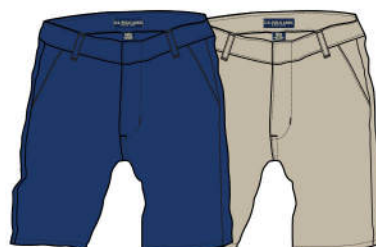


STYLE	WH	NA	RD	BL	GD	BU	MSRP
T46617 2T-4T	S	S	S	S	S	S	\$22.00

IB52 FLAT FRONT SHORT

- ADJUSTABLE WAIST
- 2 SLASH POCKETS
- HOOK & BAR CLOSURE
- COTTON BLEND TWILL

STYLE	NA	KH	MSRP
S4SM99 2T-4T	S	S	\$28.00



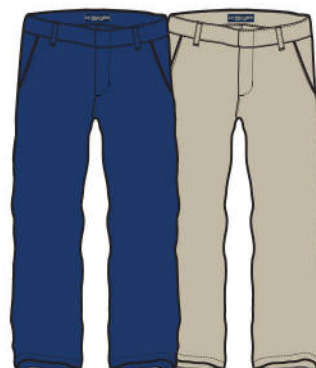
NA

KH

9854 FLAT FRONT TWILL PANT

- COTTON BLEND TWILL
- ADJUSTABLE WAIST
- FLAT FRONT
- 2 SLASH POCKETS
- HOOK & BAR CLOSURE

STYLE	NA	KH	MSRP
E49854 2T-4T	P	P	\$30.00



NA

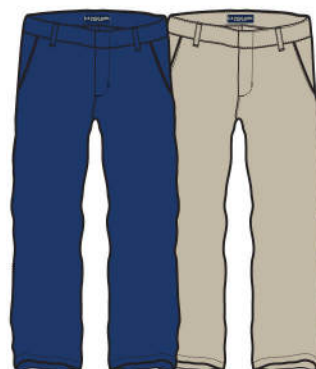
KH

9855 * *New Modern Fit* FLAT FRONT TWILL PANT

NEW

- COTTON BLEND TWILL - 3% SPANDEX
- ADJUSTABLE WAIST
- FLAT FRONT
- 2 SLASH POCKETS
- HOOK & BAR CLOSURE

STYLE	NA	KH	MSRP
E49855 2T-4T	P	P	\$30.00



NA

KH

LiMiTeD ToO

School Uniform
Fall 2018

2211

2 PC PACK S/S JERSEY POLO W/ PICOT EDGE

- FLAT KNIT COLLAR W/ PICOT TRIM
- OPEN CUFF W/ PICOT TRIM EGDE
- FLOWER BUTTON
- COTTON BLEND JERSEY



WH

NA

BL

STYLE	WH	NA	BL	MSRP
T22211 4-6X	P	P	P	\$38.00
T32211 7-16	P	P	P	\$38.00

3179

S/S JERSEY POLO W/ LACE HEM

- SELF COLLAR
- OPEN CUFF
- 4 HOLE PEARLIZED BUTTON
- LACE HEM W/ SIDE SLITS
- COTTON BLEND JERSEY



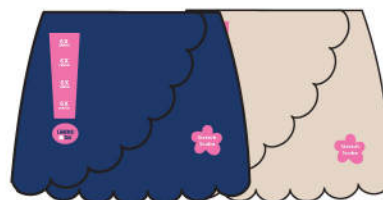
WH

STYLE	WH	MSRP
T23179 4-6X	P	\$26.00
T33179 7-16	P	\$26.00

3177

SOFT SCUBA SCOOTER

- SCOOTER
- SCALLOPED FAUX WRAP FRONT
- KNIT SHORT FOR COMFORT
- POLYESTER



NA

KH

STYLE	NA	KH	MSRP
K23177 4-6X	P	P	\$28.00
K33177 7-16	P	P	\$28.00

3174

STRETCH PIQUE KNIT DRESS

- A-LINE
- LACE UP PLACKET DETAIL
- BACK SLEEVE BUTTON CLOSURE
- CONTRAST NECK TRIM
- STRETCH PIQUE



NA

STYLE	NA	MSRP
A23174 4-6X	P	\$30.00
A33174 7-16	P	\$30.00



Florida, Caribbean & Central America

GV Sales Group / Terry & Hector Garcia
2335 NW 107 Ave.
BOX 123 Suite 2M41
Miami, FL 33172
Ph: 786-336-8996
Fax: 786-336-8997
website: www.gvsalesgroup.com

Midwest

Southard & Associates Inc. / PJ Southard
303 Saddle Lane
Fox River Grove, IL 60021
Ph: 847-381-8150 Cel. 224-622-0924
Fax: 847-620-0709

West Coast, Mexico & International

Mizrahi Enterprises dba Planet Kids / Silvano Mizrahi
464 West 11th Street
San Pedro, CA 90731
Ph: 310-832-7519
Fax: 310-832-7737
website: www.planetkidsonline.com
email: silvano@longstreet.com

Southeast

Harry F. (Buddy) Cohen
2005 Forest Cove Dr.
Ph: 205-988-3580 Cel. 205-307-9569
Fax: 205-278-5547
email: buddy@longstreet.com